

Powered by **Experience.** Driven by **Expertise.**

We specialize in building construction and high-quality finishing for villas and buildings. Our team delivers durable, modern and refined structures with a focus on craftsmanship and detail. From start to finish, we ensure functional and visually appealing spaces.



egy build
construction L L C

Company Profile

www.egybuild.ae

Content



▶ Introduction	01
▶ General Manager Message	02
▶ Why Egy build Construction LLC	03
▶ Vision & Mission	04
▶ Organization Chart	05
▶ Projects List	06
• Ongoing Building Projects	06
• Completed Building Projects	06
• Ongoing Villas Projects	06
• Completed Villas Projects	09
▶ Our Projects Portfolio	10
• Projects - Building Photos	11
• Projects - Villas Photos	14
▶ Legal Document & Awards	25
▶ Our Clients	28
▶ Our Office Location	29



Introduction

Your vision, our expertise. Trusted construction partners in the UAE since 2007

Egy Build Construction specialises in delivering high-quality commercial and residential construction, High Rise Buildings, Luxury Villas, Shopping Malls, Mosques, Warehouses, Schools and Hotels.

Founded in 2007 by Eng. Ahmed with a clear purpose to be a trusted true build partner. We are privately owned, agile, and innovative – and our can-do culture means we achieve sustainable growth year-on-year.

Headquartered in Al Rigga, Dubai, our office is home to a dedicated team of qualified engineers and management professionals. By leveraging cutting-edge programs and advanced management techniques, they provide expert support to our highly skilled workforce operating across more than 160 active construction sites throughout the UAE. Our extensive portfolio of completed projects and satisfied clients stands as a testament to our commitment to quality and schedule-driven delivery. Furthermore, our high rate of repeat business is a clear reflection of the deep trust our clients place in our capabilities.



ENG. AHMED M.WAGIH
FOUNDER & GENERAL MANAGER.
EGYBUILD CONSTRUCTION LLC.

General Manager Message

Ethics are more than a policy at Egybuild—they are our heartbeat. We prioritize transparency and respect in every relationship, from our internal team to the public. Our strategy focuses on merging our diverse expertise to deliver innovative, high-quality results across the industry.

Diversity and collaboration are the heart of EGYBUILD. Whether we are breaking ground on a luxury high-rise or developing expansive residential communities, we utilize the latest technology to ensure our projects set the national standard.

Our philosophy is simple:

- ▶ **Client-Centricity:** Every partnership is valued and built on absolute integrity.
- ▶ **Innovation:** We use modern ideas to solve complex construction challenges.
- ▶ **Excellence:** Our dedicated team is driven to exceed expectations.

We thank our clients for their trust and look forward to continuing our legacy of outperforming goals and delivering superior quality.



Why Egy build Construction LLC

With an extensive internal infrastructure of equipment and skilled labor, we possess the unique advantage of offering a remarkably lean and aggressive pricing structure.

Our success is built on a foundation of unwavering focus. By limiting our portfolio to a maximum of 25–28 active projects, we guarantee Main Board Director involvement from inception to completion.

This hands on leadership ensures rapid problem solving and rigorous quality control. Combining director level oversight with a highly skilled workforce, Egybuild offers a competitive, professional edge. Whether navigating the nuances of high-end residential builds or the technical demands of commercial shell and core projects, our proven track record makes Egybuild the premier choice for your next partnership.

Vision

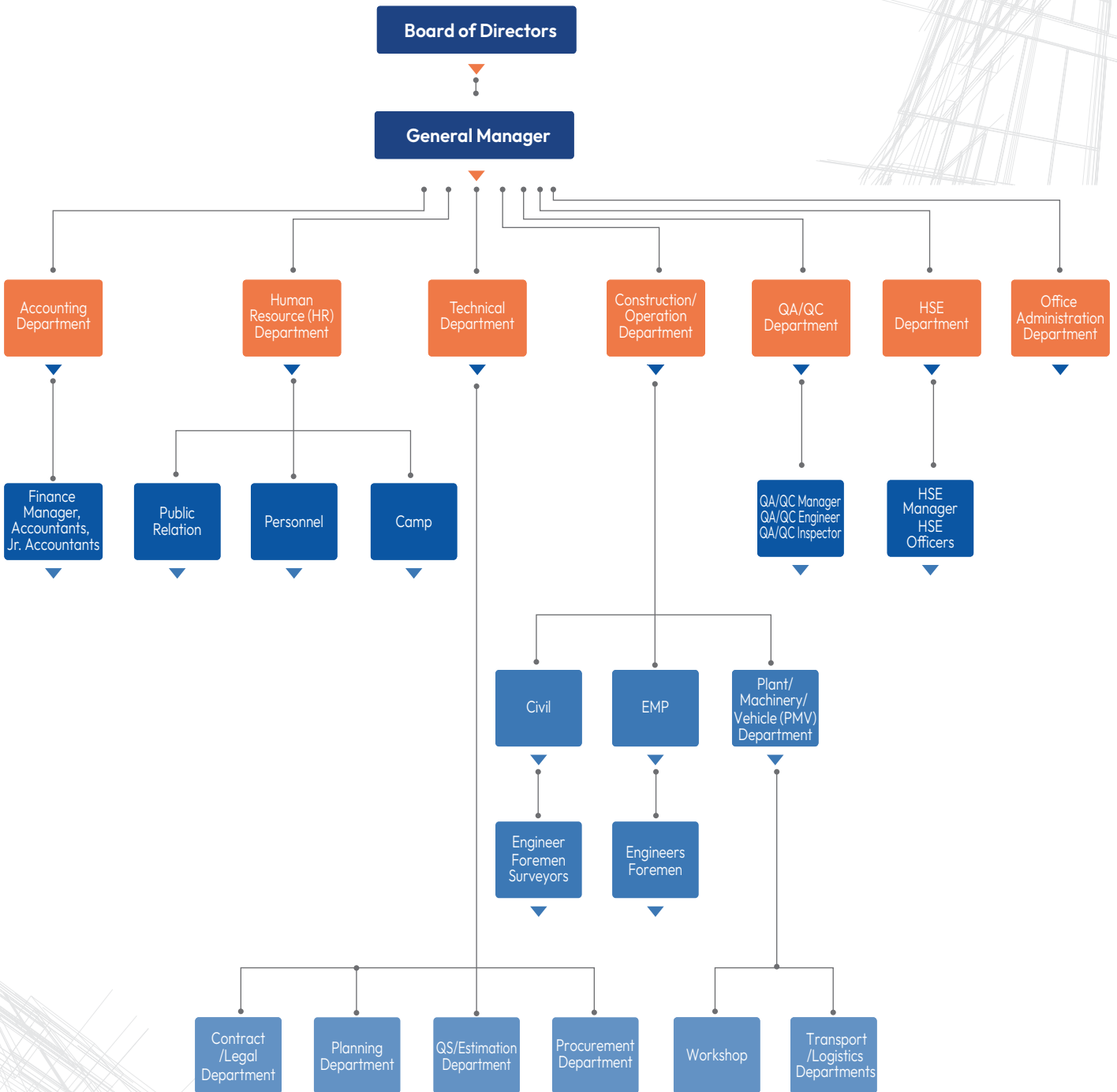
We aim to set a global benchmark for the construction industry by maximizing our potential through a deep commitment to our clients, employees, and communities. By upholding our core principles and honoring every promise, we are revolutionizing the sector and building a more sustainable future for the entire built environment.

Mission

We are committed to delivering high-quality projects on time and under budget. By fostering a strong partnership among our team and shareholders, we focus on operational excellence and efficiency. Our goal is to exceed client expectations while maintaining the productivity necessary to ensure consistent growth and returns.



Organization Chart



Projects List

ONGOING BUILDINGS PROJECTS

S.N	PROJECT NO	PROJECT DESCRIPTION	NAME OF CONSULTANT	LOCATION	COMPLETION YEAR
1	EGY-359	Building (G+2+R)	Consultant Center Engineering Desging	Hor Alanz	Running
2	EGY-358	Residential Building (G+P+7+HC)	Eng. Adnan Saffarriani Office	Mankhool	Running
3	EGY-355	Residential & Commercial Building (G+3F+R)	Al Mishkat Engineering Consultants	Al Karama	Running
4	EGY-353	Building (G+3+R)	Al Mishkat Engineering Consultants	Al Karama	Running
5	EGY-351	Proposed Commercial Building (Shop)	Vow Engineering Consultant	Al Warga 1	Running
6	EGY-347	Proposed Residential & Commercial Building (G+3F+R)	Al Mishkat Engineering Consultants	Al Karama	Running
7	EGY-343	Proposed Residential & Commercial Building (G+4F+R)	Al Mishkat Engineering Consultants	Al Baraha	Running
8	EGY-338	Proposed Comm & Office Building (G+M+1+R)	Future Design Engineering Consultants	Al Ras	Running
9	EGY-333	Commercial & Residential Building (G+3Typ+R)	Eco	Al Karama	Running
10	EGY-332	Residential Building (G+3+R)	Al Mishkat Engineering Consultants	Al Karama	Running
11	EGY-327	Building (G+2+R)	Noble Engineering Consultant	Al Muraqqabat	Running
12	EGY-326	Commercial Building (Shops)	Monarch Designs	Abu Hail	Running
13	EGY-314	Residential Building (G+4TYP+R)	Monarch Designs	Al Murar	Running
14	EGY-311	Building (G+3TYP+R)	Eco	Al Karama	Running
15	EGY-308	Residential Building (G+P+5)	Iconic Architectural & Engineering Consultants Consultants	Wadi Al Safa	Running
16	EGY-306	Residential Building (B+G+6+R +B.W)	W & M Engineering Consultant	Warsan 4Th	Running

COMPLETED BUILDINGS PROJECTS

S.N	PROJECT NO	PROJECT DESCRIPTION	NAME OF CONSULTANT	LOCATION	COMPLETION YEAR
1	EGY-65	Building (G+4+R)	Safeer Engineering Consultant	Al Baraha	2012
2	EGY-113	Building (G+M+3+R)	W & M Engineering Consultant	Al Dhaghya	2015
3	EGY-114	Building (G+M+1+R)	Al Majal Engineering Consultants	Al Dhaghya	2015
4	EGY-115	Building (G+M+4+2R)	Al Majal Engineering Consultants	Al Ras	2017
5	EGY-116	Building (G+M+1+R)	Al Majal Engineering Consultants	Hor Alanz	2016
6	EGY-117	Building (G+M+1+R)	Al Majal Engineering Consultants	Al Dhaghya	2015
7	EGY-119	Building (G+M+2)	Future Design Engineering Consultants	Al Muteena	2017
8	EGY-121	Building (G+M+2)	W & M Engineering Consultant	Hor Alanz	2015
9	EGY-129	Building (G+M+2)	Future Design Engineering Consultants	Al Ras	2016
10	EGY-134	Building (G+M+4+2R)	Safeer Engineering Consultant	Al Murar	2017
11	EGY-135	Multi Function (G+1)+Shop (G+1)	Al Dana Engineering Consultan	Al Barsha South	2017
12	EGY-148	Commcerical Building (G+3+R)	Al Wantan Alarabi Engineering Cosultant	Abu Hail	2019
13	EGY-150	Proposed Building G+M+2+2R	Eng. Adnan Saffarriani Office	Naif	2019
14	EGY-153	Proposed Building (G+2+R)	Safeer Engineering Consultant	Al Muteena	2018
15	EGY-154	Building (G+M+2)	Consultant Center Engineering Desging	Jumeriah 1	2018
16	EGY-160	Building (G+P+4+R)	Al Dana Engineering Consultan	Warsan 1	2019
17	EGY-161	Building (B+G+M+3+R)	Eco	Al Dhaghya	2024
18	EGY-162	Cedar Private School (G+3+S.B)	7Lines Eng.Consultant	Al Warga 1	2019
19	EGY-166	Building (G+2+R)	Engineer Adana Safareni	Alyal Nasir	2020
20	EGY-172	Building (G+3TYP+R)	Al Dana Engineering Consultan	Al Hamriya	2020
21	EGY-185	Building (G+1M+1+1R)	Chawla Architectural And Consultan	Al Dhaghya	2021
22	EGY-186	Building (G+M+1F+R)	Cubic Engineering Consultant	Al Dhaghya	2021
23	EGY-201	Building (G+M+1)	Vow Engineering Consultant	Naif	2022
24	EGY-206	Building (B+G+2+RF)	7Lines Eng.Consultant	Al Raffa	2022
25	EGY-208	Building (G+3+R)	Safeer Engineering Consultant	Albada	2022
26	EGY-214	Building (B+G+M+4TYP+R)	Adwar Engineering Consultants	Alyal Nasir	2024
27	EGY-216	Commercial Building (G+1+R)	Skopas Engineering Consultants	Al Jafilya	2023

28	EGY-217	Building (G+2F+R)	Aldana Engineering Consultants	Hor Alanz	2022
29	EGY-228	Building (G+3+R)	Al Mishkat Engineering Consultants	Al Karama	2023
30	EGY-233	Building (G+3+R)	Al Mishkat Engineering Consultants	Al Karama	2024
31	EGY-254	Building (G+3+R)	Al Mishkat Engineering Consultants	Al Karama	2024
32	EGY-256	Building (G+3+R)	Al Mishkat Engineering Consultants	Al Karama	2024
33	EGY-261	Building (G+3+R)	Consultant Center Engineering Desging	Al Karama	2025
34	EGY-282	Building (G+M+1+R)	Monarch Designs	Al Buteen	2025
35	EGY-288	Commercial & Residential Building (G+P+6+R)	Iconic Architectural & Engineering Consultants Consultants	Al Warga 1	2025
36	EGY-290	Building (G+3TYP+R)	Eco	Al Karama	2025
37	EGY-293	Building (G+M+1+R)	Consultant Center Engineering Desging	Al Karama	2025
38	EGY-294	Commercial & Residential Building (G+M+1+R)	Eco	Al Dhaghya	2025
39	EGY-324	Building (G+3+R)	Al Mishkat Engineering Consultants	Al Karama	2026

ONGOING VILLAS PROJECTS

S.N	PROJECT NO	PROJECT DESCRIPTION	NAME OF CONSULTANT	LOCATION	COMPLETION YEAR
1	EGY-360	Villa (G+1)	Adwar Engineering Consultants	Muhaisanah 1St	Running
2	EGY-357	Villa (G+1+B.W)	Al Jazeera Architect Consultancy	Al Awir 1St	Running
3	EGY-356	Villa (G+1+B.W)	Al Hadara Consulting Engineering Llc	Al Barsha South Second	Running
4	EGY-354	Villa (G+B.W)	Msm Architectural & Engineering Consultants	Al Rashidiya	Running
5	EGY-352	Villa (G+1+BW)	Iconic Architectural & Engineering Consultants Consultants	Al Awir 1St	Running
6	EGY-350	VILLA (G+B.W)	Al Hadara Consulting Engineering Llc	Al Khawneej 2	Running
7	EGY-349	VILLA (G+B.W)	Iconic Architectural & Engineering Consultants Consultants	Al Warga 3	Running
8	EGY-348	Villa (G+1)	Next Engineering Consultants	Umm Nahad 3Rd	Running
9	EGY-346	Villa (G)	Iconic Architectural & Engineering Consultants Consultants	Nad Al Hammar	Running
10	EGY-345	Villa (G)	Gececo Consulting Engineers	Al Khawneej 1	Running
11	EGY-344	Villa (G+1+B.W)	Al Hadara Consulting Engineering Llc	Umm Nahad 4Th	Running
12	EGY-342	Villa (G+1+B.W)	Gececo Consulting Engineers	Mankhool	Running
13	EGY-341	Villa (G+1)	Al Khawajah Engineering Consultancy	Wadi Al Amardi	Running
14	EGY-340	Villa (G+1)	Innovative Consultants Consulting Architects & Engineers	Al Khawneej 1	Running
15	EGY-339A	Villa (G+1+R)	Hyve Architects Engineering Consultants	Umm Nahad 4Th	Running
16	EGY-339B	Villa (G+1+R)	Hyve Architects Engineering Consultants	Umm Nahad 4Th	Running
17	EGY-337	Villa (G)	Gececo Consulting Engineers	Al Awir 1St	Running
18	EGY-336	Villa (G+1+R)	Consultant Center Engineering Desging	Hor Alanz	Running
19	EGY-334	Villa (G+1+S.B+B.W)	Msm Architectural & Engineering Consultants	Al Khawneej 2	Running
20	EGY-330	Villa (G Only)	Gececo Consulting Engineers	Al Khawneej 2	Running
21	EGY-329	Villa (G+1)	Al Jazeera Architect Consultancy	Umm Nahad 3Rd	Running
22	EGY-319	Villa (G+1+B.W)	Arkan Engineering Consultancy	Umm Suqeim Third	Running
23	EGY-310	Villa (G+1+D.R+B.W)	Next Engineering Consultants	Oud Al Muttana	Running
24	EGY-307	Villa (G+B.W)	Msm Architectural & Engineering Consultants	Madinet Hind 3Rd	Running
25	EGY-302	Villa (G)	Tilal Engineering Consultants	Wadi Al Shabak	Running
26	EGY-289	Villa (G+1+S.B)	Msm Architectural & Engineering Consultants	Madinat Hind 4Th	Running
27	EGY-274	Villa (G+1)	W & M Engineering Consultant	Jabal Ali 1St	Running
28	EGY-273	Villa (G+1+S.B+B.W)	Arkan Engineering Consultancy	Nadd Al Shiba 3Rd	Running
29	EGY-270B	Construction, Maintenance, And Building Addition Works	Mbrhe	Al Barsha Second	Running
30	EGY-244	Residential Villa (B+G+1+R)	W & M Engineering Consultant	Nad Al Sheba Gardens	Running
31	EGY-225	Villa (G+1+R)	Al Mishkat Engineering Consultants	Al Barsha Second	Running
32	EGY-205	Villa (G+1)	Tilal Engineering Consultants	Al Khawneej 1	Running
33	EGY-194	Villa (B+G+1)	Naga Consultant	Nad Alsheba	Running

COMPLETED VILLAS PROJECTS

S.N	PROJECT NO	PROJECT DESCRIPTION	NAME OF CONSULTANT	LOCATION	COMPLETION YEAR
1	EGY-1	Villa (G)	E.Home Engineering Consultants	Al Khawneej 1	2009
2	EGY-2	Villa (G+SB)	Sas Engineering Consultant	Al Warga 4	2008
3	EGY-3	Villa (G+1)	Sas Engineering Consultant	Al Warga 3	2008
4	EGY-4	Villa (G+1+SB)	Sas Engineering Consultant	Al Warga 3	2008
5	EGY-5	Villa (G)	Sas Engineering Consultant	Al Warga 4	2009
6	EGY-6	Villa (G+1)	Alanfal Engineering Consultants	Al Warga 2	2009
7	EGY-7	Villa (G+1+SB)	Sas Engineering Consultant	Al Mizher 1	2009
8	EGY-8	Villa (G+1+SB+CP+S.Pool)	Access Engineering Consultants	Al Khawneej 1	2010
9	EGY-9	Villa (G)	Sas Engineering Consultant	Al Warga 3	2009
10	EGY-10	Villa (G)	High Art Engineering Consultants	Al Warga 2	2009
11	EGY-11	Villa (G)	Future Design Engineering Consultants	Al Warga 2	2009
12	EGY-12	Villa (G+1)	Sas Engineering Consultant	Oud Al Muteena 2Nd	2009
13	EGY-13	Villa (G)	Sas Engineering Consultant	Nad Al Hammar	2010
14	EGY-14B	Villa (G)	Al Gethoor Engineering Consultant	Al Warga 1	2010
15	EGY-14 V	14 villa (G+1R)	Vow Engineering Consultant	Saih Shuaib First	2015
16	EGY-14	Villa (G)	Al Manhal Engineering Consultants	Al Warga 2	2010
17	EGY-15	Villa (G+1)	Sas Engineering Consultant	Oud Al Muteena 2Nd	2010
18	EGY-16	Villa (G)	W & M Engineering Consultant	Al Warga 2	2010
19	EGY-17	Villa (G)	Sas Engineering Consultant	Al Warga 3	2010
20	EGY-18	Villa (G)	E.Home Engineering Consultants	Al Khawneej 1	2010
21	EGY-19	Villa (G+1)	Al Raed Engineering Consultants	Al Khawneej 1	2011
22	EGY-20	Villa (G+1+SB)	Al Ghaith Engineering Consultant	Oud Al Muteena 2Nd	2010
23	EGY-21	Villa (G+1)	German Engineering Consultants	Al Warga 2	2010
24	EGY-22	Villa (G+1)	Al Anfal Engineering Consultants	Al Warga 3	2010
25	EGY-23	Villa (G+1)	Sas Engineering Consultant	Al Warga 3	2010
26	EGY-24	Villa (G+1)	Sas Engineering Consultant	Al Warga 2	2010
27	EGY-25	Villa (G)	German Engineering Consultants	Al Warga 3	2010
28	EGY-26	Villa (G+1)	Al Mulla Engineering Consultants	Nad Al Shamma	2011
29	EGY-27	Villa (G+1+SB)	German Engineering Consultants	Al Warga 2	2011
30	EGY-28	Villa (G+1)	Safeer Engineering Consultant	Al Warga 3	2012
31	EGY-29	Villa (G+1)	German Engineering Consultants	Oud Al Muteena 2Nd	2011
32	EGY-30B	Villa (G+1)	Al Gethoor Engineering Consultant	Al Warga 3	2011
33	EGY-30	Villa (G+1)	Team 90 Engineering Consultant	Al Warga 3	2011
34	EGY-31	Villa (G+1)	Al Gethoor Engineering Consultant	Al Warga 3	2011
35	EGY-31B	Villa (G+1)	Al Gethoor Engineering Consultant	Muhaisnah 3	2013
36	EGY-32	Villa (G+1)	B.T.A Engineering Consultants	Al Warga 2	2011
37	EGY-33	Villa (G+1+SB)	Al Anfal Engineering Consultants	Nad Al Hammar	2011
38	EGY-34	Villa (G+1)	High Art Engineering Consultants	Al Khawneej 1	2014
39	EGY-35	Villa (G+1)	Sas Engineering Consultant	Nad Alsheba	2012
40	EGY-36	Villa (G+1)	Al Anfal Engineering Consultants	Al Warga 4	2011
41	EGY-37	Villa (G+1)	Sas Engineering Consultant	Al Warga 2	2011
42	EGY-38	Villa (G+1+SB)	Sas Engineering Consultant	Al Warga 3	2011
43	EGY-39	Villa (G+1)	Touch Free Hands Engineering Consultants	Al Khawneej 1	2014
44	EGY-40	Villa (G+1+SB)	German Engineering Consultants	Al Mizher 1	2011
45	EGY-41	Villa (G)	Ramesh Eng. Cons	Al Warga 2	2012
46	EGY-42	Villa (G+1+SB)	Sas Engineering Consultant	Al Khawneej 1	2012
47	EGY-43	Villa (G+1+SB)	Safeer Engineering Consultant	Oud Al Muteena 2Nd	2012
48	EGY-44	Villa (G)	Pioneer Of Experts Eng. Consultant	Al Warga 4	2012
49	EGY-45	Villa (G+1)	Future Design Engineering Consultants	Al Khawneej 1	2012
50	EGY-46	Villa (G+1)	High Art Engineering Consultants	Al Warga 1	2012
51	EGY-47	Villa (G+1)	Al Anfal Engineering Consultants	Al Warga 2	2012
52	EGY-48	Villa (G+1+SB)	Tasees Engineering Consultant	Nad Al Hammar	2012

53	EGY-49	Villa (G+1)	Winner Engineering Consultants	Al Mizher 1	2012
54	EGY-50	Villa (G+1)	Al Anfal Engineering Consultants	Al Khawneej 1	2013
55	EGY-51	Villa (G+1+SB)	E.Home Engineering Consultants	Nad Al Hammar	2012
56	EGY-52	Villa (G+1)	Al Anfal Engineering Consultants	Al Warga 2	2012
57	EGY-53	Villa (G+1+SB)	Tasees Engineering Consultant	Oud Al Muteena 2Nd	2012
58	EGY-54	Villa (G+1)	Talent Engineering Consultants	Al Rashidiya	2012
59	EGY-55	Villa (G+1)	E.Home Engineering Consultants	Oud Al Muteena 2Nd	2012
60	EGY-56	Villa (G+1+SB)	Al Anfal Engineering Consultants	Al Khawneej 1	2013
61	EGY-57	Villa (G)	Al Gethoor Engineering Consultant	Oud Al Muteena 2Nd	2012
62	EGY-58	Villa (G+1+SB)	Al Anfal Engineering Consultants	Al Mizher 1	2012
63	EGY-59	Villa (G+1)	High Art Engineering Consultants	Al Mizher 1	2013
64	EGY-60	Villa (G+1+SB)	Arabian Modern Engineering Consultants	Al Warga 3	2012
65	EGY-61	Villa (G+1)	Talent Engineering Consultants	Al Khawneej 1	2013
66	EGY-62	Villa (G+1)	B.T.A Engineering Consultants	Al Mizher 1	2012
67	EGY-63	Villa (G+1)	Sas Engineering Consultant	Al Warga 3	2013
68	EGY-64	Villa (G+SB)	Winner Engineering Consultants	Al Warga 4	2012
69	EGY-66	Villa (G+1)	Talent Engineering Consultants	Al Khawneej 1	2012
70	EGY-67A	Villa (G+1)	High Art Engineering Consultants	Al Warga 4	2014
71	EGY-67B	Villa (G+1)	High Art Engineering Consultants	Al Warga 4	2013
72	EGY-68	Villa (G+1)	Touch Free Hands Engineering Consultants	Al Khawneej 1	2014
73	EGY-69	Villa (G+1)	Sas Engineering Consultant	Oud Al Muteena 2Nd	2015
74	EGY-70	Villa (G+1)	Sas Engineering Consultant	Oud Al Muttana	2012
75	EGY-71	Villa (G+1+SB)	German Engineering Consultants	Al Warga 2	2012
76	EGY-72	Villa (G+1)	German Engineering Consultants	Al Mizher 1	2012
77	EGY-73	Villa (G+1+SB)	Al Anfal Engineering Consultants	Al Khawneej 1	2013
78	EGY-74	Villa (G)	High Art Engineering Consultants	Al Warga 3	2012
79	EGY-75	Villa (G+1+SB)	Al Jethor Engineering Consultants	Al Warga 4	2013
80	EGY-76A	Villa (G+1+SB)	Sas Engineering Consultant	Al Warga 2	2013
81	EGY-76B	Villa (G+1+SB)	Al Gethoor Engineering Consultant	Nad Al Hammar	2012
82	EGY-77	Villa (G+1)	Sas Engineering Consultant	Al Khawneej 1	2012
83	EGY-78	Villa (G+1)	Next Engineering Consultants	Al Mizher 1	2012
84	EGY-79	Villa (G+1)	Lines Engineering Consultants	Al Warga 2	2012
85	EGY-80	Villa (G+1)	Winner Engineering Consultants	Al Khawneej 1	2012
86	EGY-81	Villa (G+SB)	Al Majal Engineering Consultants	Al Warga 3	2013
87	EGY-82	Villa (G+SB)	Sas Engineering Consultant	Al Warga 2	2013
88	EGY-83	Villa (G+1+SB)	Tasees Engineering Consultant	Al Mizher 1	2014
89	EGY-84	Villa (G+1+SB)	Pioneer Of Experts Eng. Consultant	Al Khawneej 1	2014
90	EGY-85	Villa (G)	German Engineering Consultants	Al Warga 3	2013
91	EGY-86	Villa (G)	Al Khozma Engineering Consultants	Al Warga 3	2013
92	EGY-87	Villa (G+1+SB)	German Engineering Consultants	Al Quoz 4	2013
93	EGY-88	Villa (G+1)	High Art Engineering Consultants	Al Warga 3	2015
94	EGY-89	Villa (G+1+SB)	Al Majal Engineering Consultants	Oud Al Muteena 2Nd	2014
95	EGY-90	Villa (G+1)	Al Manhal Engineering Consultants	Al Mizher 1	2014
96	EGY-91	Villa (G+1)	B.T.A Engineering Consultants	Al Khawneej 1	2013
97	EGY-92	Warehouse Ground Floor	Next Engineering Consultants	Al Qouz 1St	2015
98	EGY-93	Villa (G+1+SB)	Sas Engineering Consultant	Al Khawneej 1	2015
99	EGY-94	Villa (G+1)	Safeer Engineering Consultant	Al Warga 3	2014
100	EGY-95	Villa (G+1)	Engineer Adana Safareni	Al Khawneej 1	2015
101	EGY-97	Villa (G)	Al Majal Engineering Consultants	Al Mizher 1	2014
102	EGY-99	Villa (G+1)	Engineer Adana Safareni	Al Barsha South	2014
103	EGY-100	Villa (G)	Al Majal Engineering Consultants	Al Warga 1	2015
104	EGY-101	Villa (G+1)	W & M Engineering Consultant	Nad Al Hammar	2015
105	EGY-102	Villa (G+1)	Vow Engineering Consultant	Muhaisnah 3	2014
106	EGY-104	Villa (G+1+SB)	Al Jawaher Engineering Consultancies	Al Mizher 1	2019
107	EGY-106	Villa (G+1)	Al Rafidain Engineering Consultant	Al Khawneej 1	2014
108	EGY-107	Villa (B+G+1)	Al Majal Engineering Consultants	Oud Al Muttana	2016
109	EGY-108	Villa (G+1)	High Art Engineering Consultants	Al Khawneej 1	2016

110	EGY-108B	Villa (G+1)	Alanfal Engineering Consultants	Al Khawneej 1	2015
111	EGY-109	Villa (G+1)	Vow Engineering Consultant	Nad Alsheba	2016
112	EGY-109B	Additional FF+PRO Service Block	Vow Engineering Consultant	Nadd Al Shiba 4Th	2025
113	EGY-110	Villa (G+1+SB)	Next Engineering Consultants	Al Barsha Second	2016
114	EGY-111	Villa (G+1+SB)	Next Engineering Consultants	Al Barsha Second	2018
115	EGY-112	Villa (G+S.B)	Vow Engineering Consultant	Oud Al Muteena 2Nd	2015
116	EGY-118 A	Villa (G+1+SB)	Al Jethor Engineering Consultants	Al Barsha South	2019
117	EGY-118B	Villa (G+1)	Al Jethor Engineering Consultants	Al Barsha South Second	2017
118	EGY-119B	VILLA G+1R	Vow Engineering Consultant	Al Mizher 1	2019
119	EGY-120	Villa (G+1)	Vow Engineering Consultant	Nad Alsheba	2016
120	EGY-122	6 Villas (G+2)	Al Majal Engineering Consultants	Midrif	2019
121	EGY-123	Villa (G+1)	Al Majal Engineering Consultants	Nad Al Hammar	2018
122	EGY-124	Villa (G+1+SB)	Engineer Adana Safareni	Al Tawar 3Rd	2016
123	EGY-125	Villa (G+1+S.B)	Al Majal Engineering Consultants	Al Warga 3	2020
124	EGY-126	Villa (G+1+SB)	Vow Engineering Consultant	Nadd Al Shiba 4Th	2018
125	EGY-127	Villa (G+1)	Vow Engineering Consultant	Al Khawneej 1	2017
126	EGY-128	Villa (G+1)	German Engineering Consultants	Al Khawneej 1	2017
127	EGY-131	Villa (G+1)	Al Dana Engineering Consultan	Umm Al Sheif	2016
128	EGY-133	Villa (G+1+SB)	Al Gethoor Engineering Consultant	Al Warga 3	2017
129	EGY-136	Villa (G+1+SB)	Xpert Engineering Consultant	Al Lesaily	2017
130	EGY-137	Villa (G+1+SB)	Al Majal Engineering Consultants	Al Barsha South	2017
131	EGY-138	Villa (G+1+SB)	Xpert Engineering Consultant	Al Khawneej 1	2017
132	EGY-139	Villa (G+1+SB)	Tasees Engineering Consultant	Nad Al Hammar	2017
133	EGY-140	Villa (G+1)	Naga Consultant	Umm Al Sheif	2018
134	EGY-143	Villa (G+1+SB)	Eng. Adnan Saffarriani Office	Al Lesaily	2019
135	EGY-145	Villa (G+1+SB)	Engineer Adana Safareni	Al Khawneej 1	2018
136	EGY-149	Villa (G+1+SB)	Al Mulla Engineering Consultants	Al Satwa	2017
137	EGY-151	Proposed Private Villa (G+1+S.B+Swimming Pool)	Consultant Center Engineering Desging	Al Barsha South	2018
138	EGY-152	Proposed Private Villa (G+1+S.Block & S.Pool)	Vow Engineering Consultant	Al Warga 4	2018
139	EGY-155	Villa (G+1+R)	Vow Engineering Consultant	Al Khawneej 2	2024
140	EGY-156	Villa (G+1+SB)	Future Art Engineering Consultant	Al Warga 4	2019
141	EGY-156	Villa (G+1+SB)	Future Art Engineering Consultant	Al Warga 4	2019
142	EGY-157	VILLA (G+1R)	Al Majal Engineering Consultants	Al Mizher 1	2019
143	EGY-159	Villa (G+1)	Pioneer Of Experts Eng. Consultant	Al Khawneej 2	2019
144	EGY-163	Two Villa (G+1+R)	Future Art Engineering Consultant	Al Satwa	2019
145	EGY-164	Villa (G+1)	Al Wantan Alarabi Engineering Cosnultant	Al Khawneej 2	2020
146	EGY-167	Villa (G+1+R)	Arkan Engineering Consultancy	Al Barsha 3Rd	2019
147	EGY-168	Villa (G+1)	German Engineering Consultants	Al Warga 3	2019
148	EGY- 169	Villa (G+1)	Ramesh Eng. Cons	Al Khawneej 2	2020
149	EGY-170	Villa (B+G+1)	Cvtec Consulting Engineers	Nad Alsheba	2024
150	EGY-171	Villa (G+1)	Arkan Engineering Consultancy	Al Warga 3	2019
151	EGY-173	Villa (G+1)	Vow Engineering Consultant	Al Warga 3	2021
152	EGY-174	Villa (B+G+1+R)	Highart Engineering Consultant	Dubai Hills	2022
153	EGY-174A	Villa (B+G+1+R)	Vow Engineering Consultant	Dubai Hills	2022
154	EGY-174B	Villa (G+1+R)	Vow Engineering Consultant	Dubai Hills	2025
155	EGY-175	Villa (G+1+R)	Tilal Engineering Consultants	Al Warga 3	2020
156	EGY-177	Villa (G+1+S.B)	Future Art Engineering Consultant	Al Warga 4	2020
157	EGY-178	Villa (G+1+S.W)	Arkan Engineering Consultancy	Al Barsha South	2020
158	EGY-179	Villa (G+1+K.B)	Arkan Engineering Consultancy	Al Awir	2020
159	EGY-180	Villa (G+1+K.B)	Arkan Engineering Consultancy	Al Awir	2020
160	EGY-181	Villa (G+1)	Pioneer Of Experts Eng. Consultant	Al Warga 4	2021
161	EGY-182	Villa (G+1)	Arkan Engineering Consultancy	Al Barsha South	2020
162	EGY-183	Villa (G+1)	Arkan Engineering Consultancy	Al Barsha South	2021
163	EGY-184	Villa (G+1)	Arkan Engineering Consultancy	Al Barsha South	2020
164	EGY-187	Villa (G+1)	Al Anfal Engineering Consultants	Al Khawneej 2	2022

165	EGY-188	Villa (G+1)	Fusion Engineering Consultancy	Al Awir	2021
166	EGY-189	Villa (G+1+R)	Al Rouya Almotakamela Eng.	Al Awir	2021
167	EGY-190A	Villa (G+1+R)	Curve Lines Engineering Consultancy	Saih Shuaib First	2025
168	EGY-190B	Villa (G+1)	Curve Lines Engineering Consultancy	Saih Shuaib First	2025
169	EGY-191	Villa (B+G+1)	Curve Lines Engineering Consultancy	Al Awir	2021
170	Egy-192-8V	8Villas (G+S.B)	Al Burj Engineering Consultants	Al Lesaily	2021
171	EGY-193	VILLA (G+1)	Arkan Engineering Consultancy	Al Barsha South	2021
172	EGY-195	Villa (G+1)	Fusion Engineering Consultancy	Al Barsha South	2021
173	EGY-196	Villa(G+1)	Arkan Engineering Consultancy	Al Awir	2021
174	EGY-197	Villa (G+1)	Arkan Engineering Consultancy	Al Awir	2021
175	Egy-197	Villa (G+1)	Arkan Engineering Consultancy	Al Awir	2021
176	EGY-198	Villa (G+1)	Vow Engineering Consultant	Al Warga 3	2021
177	EGY-199	Two Villas (G+1)	Future Art Engineering Consultant	Hor Alanz	2021
178	EGY-200	Villa (G+1)	Naga Consultant	Al Barsha South	2024
179	Egy-200	Villa (G+1)	Naga Consultant	Al Barsha South	2024
180	EGY-202	Villa (G+1)	Arkan Engineering Consultancy	Umm Nahad 3Rd	2022
181	EGY-202	Villa (G+1)	Arkan Engineering Consultancy	Umm Nahad 3Rd	2022
182	EGY-203	Villa (G+1)	Arkan Engineering Consultancy	Jumeriah 1	2022
183	EGY-204	Villa (G+1)	Direct Engineering Consultants	Al Warga 4	2024
184	EGY-205B	VILLA (G+1)	Curve Lines Engineering Consultancy	Al Khawneej 1	2024
185	EGY-207	Private Villa (G+1)	Tilal Engineering Consultants	Jumeira 2Nd	2025
186	EGY-209B	Residential Two Villas (G+1+R)	Al Dana Engineering Consultan	Nad Alsheba	2023
187	EGY-209A	Residential Two Villas (G+1+R)	Al Dana Engineering Consultan	Nad Alsheba	2023
188	EGY-210	Villa (G+1)	Arkan Engineering Consultancy	Al Awir	2022
189	EGY-211	Villa (G+1)	Arkan Engineering Consultancy	Saih Shuaib First	2023
190	EGY-212	Villa (G+1)	Arkan Engineering Consultancy	Al Wuheida	2022
191	EGY-213	Villa (G+1+S.B)	Tilal Engineering Consultants	Al Khawneej 2	2024
192	EGY-215-M	Maintenance Works for 500Homes Project	Mbrhe	Oud Al Muttena	2025
193	EGY-215-9V	9 VILLA	Module Engineering Consultant	Oud Al Muttena	2022
194	EGY-218	Villa (G+1+R)	W & M Engineering Consultant	Al Warga 3	2024
195	EGY-219	Existing Villa (G+1+R)	Tilal Engineering Consultants	Nad Alsheba	2024
196	EGY-220A	Villa (G+1+R)	Tasees Engineering Consultant	Nad Alsheba	2023
197	EGY-220B	Villa (G+1+R)	Tasees Engineering Consultant	Nad Alsheba	2023
198	EGY-221	Villa (G+2)	Tasees Engineering Consultant	Umm Nahad 3Rd	2025
199	EGY-222	Two Investment Villas (G+1+R)	W & M Engineering Consultant	Hor Alanz	2023
200	EGY-223	Residence Villa (G+1)	Arkan Engineering Consultancy	Umm Suqeim Third	2023
201	EGY-224A	Residence Villa (G+1+S.B)	Arkan Engineering Consultancy	Umm Nahad 3Rd	2023
202	EGY-224B	Residence Villa (G+1+S.B)	Arkan Engineering Consultancy	Umm Nahad 3Rd	2023
203	EGY-226	Residential Villa (G+1)	Onix Engineering Consultancy	Nad Al Hammar	2023
204	EGY-227	Villa (G+1)	Vow Engineering Consultant	Oud Al Muttena	2024
205	EGY-229	Residence Villa (G+1+S.B)	Arkan Engineering Consultancy	Al Awir	2024
206	EGY-230	Residence Villa (G+1)	Arkan Engineering Consultancy	Al Goze "G"	2023
207	EGY-231	Twin Villa (G+1+R)	Al Mishkat Engineering Consultants	Hor Alanz	2023
208	EGY-232	Residence Villa (G+1)	Onix Engineering Consultancy	Jabal Ali 1St	2024
209	EGY-234	Residence Villa (G+1)	Arkan Engineering Consultancy	Al Khawneej 2	2023
210	EGY-235	Residence Villa (G+1)	Arkan Engineering Consultancy	Al Awir 2Nd	2023
211	EGY-236	Residence Villa (G+1)	Arkan Engineering Consultancy	Al Khawneej 2	2023
212	EGY-237	Private Villa (G+1+R)	Tasees Engineering Consultant	Ummus Saqem	2025
213	EGY-238	Villa (G+1)	Red Crystal Engineering Consultancy	Al Awir 1St	2024
214	EGY-239	2 Villa (GR+1+R)	Safeer Engineering Consultant	Albada	2023
215	EGY-241	Villa (G+1)	Al Majal Engineering Consultants	Mushrif	2024
216	EGY-243	Villa (G+1)	Gececo Consulting Engineers	Al Barsha South 1St	2024
217	EGY-245	Villa (G)	Next Engineering Consultants	Oud Al Muteena 2Nd	2024
218	EGY-246	Villa (G+1)	Arkan Engineering Consultancy	Al Qouz 2Nd	2024
219	EGY-247	Villa (G)	Gececo Consulting Engineers	Al Awir 1St	2024
220	EGY-248	Residential Villa (G+1+SB)	Future Art Engineering Consultant	Al Barsha Second	2024
221	EGY-249	Residence Villa (G+1)	Arkan Engineering Consultancy	Umm Nahad 3Rd	2023

222	EGY-250	Residence Villa (G+1)	Arkan Engineering Consultancy	Umm Nahad 3Rd	2024
223	EGY-251	Villa (G+1+R)	Tilal Engineering Consultants	Al Awir 1St	2024
224	EGY-252	Twin Villa (G+1+R)	Al Mishkat Engineering Consultants	Al Satwa	2024
225	EGY-253	Villas (B+G+1)	Curve Lines Engineering Consultancy	Hadaeq Sheikh Mohammed Bin Rashid	2026
226	EGY-255	Villa (G+1)	Arkan Engineering Consultancy	Al Manara	2024
227	EGY-257	Villa (G+1)	Tasees Engineering Consultant	Al Awir 1St	2025
228	EGY-258	Villa (G)	Msm Architectural & Engineering Consultants	Al Rashidiya	2024
229	EGY-259	Twin Villa (G+1+R)	Al Mishkat Engineering Consultants	Al Satwa	2024
230	EGY-260	Villa (G)	Next Engineering Consultants	Umm Suqeim 2Nd	2024
231	EGY-262	Villa (G+1)	Arkan Engineering Consultancy	Al Barsha Second	2024
232	EGY-263	Villa (G+1)	Arkan Engineering Consultancy	Al Rashidiya	2024
233	EGY-264	Villa (G+1+S.B+B.W)	Iconic Architectural & Engineering Consultants Consultants	Mushrif	2024
234	EGY-265	Villa (G+1)	3004 Engineering Consultancies	Al Awir 1St	2025
235	EGY-266	Villa (G+1+B.W)	Arkan Engineering Consultancy	Al Awir 1St	2024
236	EGY-267	Villa (G+1)	Arkan Engineering Consultancy	Al Khawneej 2	2024
237	EGY-268	Villa (G+1)	Arkan Engineering Consultancy	Al Khawneej 2	2024
238	EGY-269	Villa (G)	Next Engineering Consultants	Al Awir 1St	2024
239	EGY-271	Villa (G+1)	High Art Engineering Consultants	Al Awir 1St	2025
240	EGY-272B	Villa (G+1+S.B+B.W)	Vow Engineering Consultant	Nadd Al Shiba 3Rd	2025
241	EGY-272A	Villa (G+1+S.B+B.W)	Vow Engineering Consultant	Nadd Al Shiba 3Rd	2025
242	EGY-275	Villa (G+1)	Next Engineering Consultants	Umm Al Sheif	2025
243	EGY-276	Villa (G+1)	Next Engineering Consultants	Al Qouz 1St	2025
244	EGY-277	Villa (G+1)	Gececo Consulting Engineers	Al Barsha 3Rd	2024
245	EGY-278	Villa (G+1)	W & M Engineering Consultant	Al Warga 3	2026
246	EGY-279	Villa (G+1+B.W)	Next Engineering Consultants	Al Awir 1St	2024
247	EGY-280	Villa (G+1+R+B.W)	Tilal Engineering Consultants	Al Awir 1St	2025
248	EGY-281	Villa (G+1)	Arkan Engineering Consultancy	Al Awir 1St	2025
249	EGY-283	Villa (G+1+B.W)	Skopas Engineering Consultants	Al Barsha Second	2025
250	EGY-284	Villa (G+1+R)	Al Jawaher Engineering Consultancies	Al Qouz 2Nd	2025
251	EGY-285	Villa (G+1)	Arkan Engineering Consultancy	Wadi Al Amardi	2024
252	EGY-286	Villa (G+1)	Arkan Engineering Consultancy	Wadi Al Amardi	2025
253	EGY-287	Villa (G+1)	Arkan Engineering Consultancy	Al Awir 1St	2025
254	EGY-291	Villa (G+1+B.W)	Msm Architectural & Engineering Consultants	Al Rashidiya	2026
255	EGY-292	Villa (G+1)	Iconic Architectural & Engineering Consultants Consultants	Umm Suqeim Third	2026
256	EGY-295	Villa (G+1+R+B.W)	Fusion Engineering Consultancy	Al Barsha Second	2025
257	EGY-296	Villa (G+1)	Gececo Consulting Engineers	Al Awir 1St	2025
258	EGY-297	Twin Villas (G+1+R)	Eco	Al Satwa	2025
259	EGY-298	Villa (G+B.W)	Msm Architectural & Engineering Consultants	Al Awir 1St	2025
260	EGY-299	Villa (G+1+B.W)	Al Khawajah Engineering Consultancy	Al Warga 3	2025
261	EGY-300	Villa (G)	Iconic Architectural & Engineering Consultants Consultants	Al Awir 1St	2025
262	EGY-301	Villa (G+1)	Gececo Consulting Engineers	Umm Nahad 3Rd	2025
263	EGY-303	Twin Villa (G+1+R+B.W)	Vow Engineering Consultant	Al Satwa	2025
264	EGY-303B	Twin Villa (G+1+R+B.W)	Vow Engineering Consultant	Al Satwa	2026
265	EGY-304	Villa (G+1+B.W)	Gececo Consulting Engineers	Al Awir 1St	2025
266	EGY-305	Villa (G+1+B.W)	Next Engineering Consultants	Al Awir 1St	2025
267	EGY-309	Villa (G+1+B.W)	Gececo Consulting Engineers	Al Awir 1St	2025
268	EGY-312	Villa (G+1+B.W)	Iconic Architectural & Engineering Consultants Consultants	Al Rashidiya	2025
269	EGY-313	Villa (G+B.W)	Al Khawajah Engineering Consultancy	Al Awir 1St	2025
270	EGY-315	Villa (G+1+B.W)	Msm Architectural & Engineering Consultants	Al Barsha South Second	2025
271	EGY-316	Villa (G+B.W)	Msm Architectural & Engineering Consultants	Al Barsha South 1St	2026
272	EGY-317	Villa (G+B.W)	Iconic Architectural & Engineering Consultants Consultants	Madinat Hind 4Th	2026

273	EGY-318	Villa (G+1+B.W)	Iconic Architectural & Engineering Consultants Consultants	Al Barsha Second	2025
274	EGY-320	Villa (G+1+B.W)	Iconic Architectural & Engineering Consultants Consultants	Albada	2025
275	EGY-321	Villa (G+1+B.W)	Next Engineering Consultants	Al Barsha Second	2026
276	EGY-323	Villa (G+1+S.B+B.W)	Iconic Architectural & Engineering Consultants Consultants	Umm Nahad 3Rd	2026
277	EGY-325	Villa (G+B.W)	Gececo Consulting Engineers	Al Rashidiya	2025
278	EGY-328	Villa (G+1+B.W)	Croqee Line Consultancy	Al Barsha Second	2026
279	EGY-331	Villa (G+1+R+B.W)	Gececo Consulting Engineers	Al Awir 1St	2026
280	EGY-743	Villa (G+1)	Safeer Engineering Consultant	Oud Al Muteena 2Nd	2019
281	EGY-746	Villa (G+1)	High Art Engineering Consultants	Al Warga 3	2017
282	EGY-792.B	Villa (G+1R)	Next Engineering Consultants	Nadd Al Shiba 3Rd	2021

COMPLETED HOTEL PROJECTS

S.N	PROJECT NO	PROJECT DESCRIPTION	NAME OF CONSULTANT	LOCATION	COMPLETION YEAR
1	EGY-98	Hotel (B+G+M+4+R)	Next Engineering Consultants	Al Ras	2015
2	EGY-240	Hotel Building (B+G+M+TYP+H.C)	Eng. Adnan Saffarriani Office	Port Saeed	2025

COMPLETED CAMP PROJECTS

S.N	PROJECT NO	PROJECT DESCRIPTION	NAME OF CONSULTANT	LOCATION	COMPLETION YEAR
1	EGY-130	Labour Camp (G+3)	Vow Engineering Consultant	Jabal Ali 1St	2017
2	EGY-132	Labour Camp (G+4)	Module Engineering Consultant	Al Qouz 1St	2016
3	EGY-158	Labor Camp (G+4)	Adwar Engineering Consultants	Jabal Ali 1St	2019

COMPLETED WAREHOUSE PROJECTS

S.N	PROJECT NO	PROJECT DESCRIPTION	NAME OF CONSULTANT	LOCATION	COMPLETION YEAR
1	EGY-158B	Warehouse (G+B.W)	Vow Engineering Consultant	Jabal Ali 1St	2026
2	EGY-792.B	Villa (G+1R)	Next Engineering Consultants	Nadd Al Shiba 3Rd	2021

COMPLETED MOSQUES PROJECTS

S.N	PROJECT NO	PROJECT DESCRIPTION	NAME OF CONSULTANT	LOCATION	COMPLETION YEAR
1	EGY-165	Mosque G+1+S.Blocks	Al Ghaith Eng. Consultant	Al Khawneej 2	2019

COMPLETED MALL PROJECTS

S.N	PROJECT NO	PROJECT DESCRIPTION	NAME OF CONSULTANT	LOCATION	COMPLETION YEAR
1	EGY-176	Jebal Ali Mall (B+G+1)	Golden Square Eng. Consultant	Jebal Ali Industrial Area 1St	2021

COMPLETED MAJALIS PROJECTS

S.N	PROJECT NO	PROJECT DESCRIPTION	NAME OF CONSULTANT	LOCATION	COMPLETION YEAR
1	EGY-240B	Majlis Block	Al Mishkat Engineering Consultants	Al Khawneej 1	2025
2	EGY-270	Majlis & Service Block	Tilal Engineering Consultants	Al Barsha Second	2025

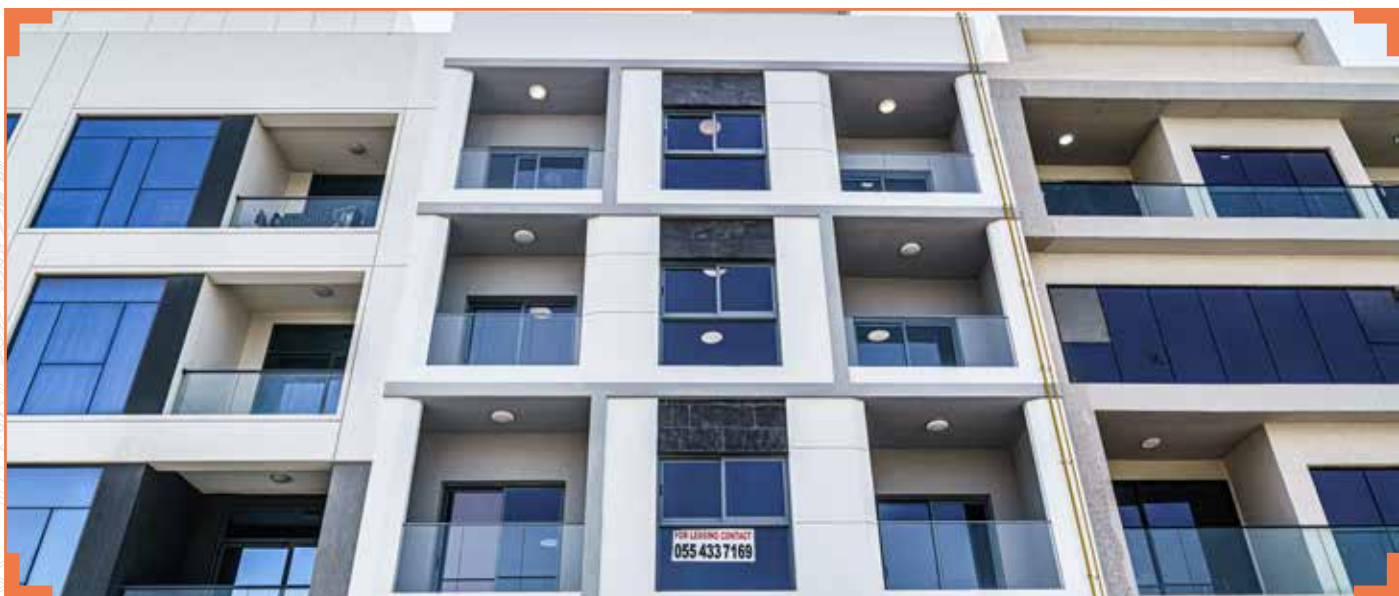
EXTENSION/RENOVATION PROJECTS

S.N	PROJECT NO	PROJECT DESCRIPTION	NAME OF CONSULTANT	LOCATION	COMPLETION YEAR
1	EGY-327B	Demolishing Construction, External Re-Paint, Completion and Maintenance of Additional Studios in Roof Plan at Existing Residential Building	Align Engineering Consultants And Interior Design Llc.	Naif	Running
2	EGY-327C	Additional 2 Appartments to the Roof at Existing Residential Building (G+2+R)	Align Engineering Consultants And Interior Design Llc.	Abu Hail	Running
3	EGY-327D	Additional One Apartment to Roof at Existing Residential Building (G+2+R)	Align Engineering Consultants And Interior Design Llc.	Hor Alanz	Running



Our Projects Portfolio

Building Projects



Building Projects



Building Projects



Building Projects



Building Projects



Building Projects



Villas Projects



Villas Projects



Villas Projects



Villas Projects



Villas Projects



Villas Projects



Villas Projects



Villas Projects



Villa Projects



Villas Projects



Villas Projects



Villas Projects



Villas Projects



Villas Projects



Villas Projects



Villas Projects



Villas Projects



Legal Document & Awards



Legal Document & Awards






شهادة تسجيل مقاول

رقم التسجيل : 1684

اسم المقاول : لبيبي بيده للإقناعات ل.م.م

الإدارة : دبي **المنطقة: صرفات** **ص.ب : 251108**

الهاتف : 042976112 **الفاكس : 042976114**

تاريخ التسجيل : 2008,02,04 **تاريخ الانتهاء : 2012,11,06**

مدير إدارة الخدمات الهندسية
عبدالله طهي رجب آل طهي



CONTRACTOR PRACTITIONERS REGISTER CERTIFICATE from Sheikh Zayed Housing Programme





محمد بن راشد الإسكان
Mohammed Bin Rashid Housing Est.

Date : 7-Feb-2008
Ref : TS/P13/0258

M/s. Egy Build Construction
P.O.Box 251108
Dubai

Dear Sir,

Subject : Contractors Prequalification Report-1

It is our pleasure to inform you that your application for contractor Pre-qualification assessment has been approved and you are entitled for 3 projects with MBR Housing Est. until further Pre-qualification report.

Yours Faithfully,



Eng. Juma Khalifa Al Fuqai
Director of Maintenance & Technical Services



CONTRACTOR PRACTITIONERS REGISTER CERTIFICATE from Mohammed Bin Rashid Housing Est.





شهادة تسجيل مقاول

التاريخ: 2014/9/1

اسم المقاول: لبيبي بيده للإقناعات - (إفقة ريماء)

بيانات المقاول:
رقم التسجيل: 492/284 **المنطقة: دبي**

بيانات التسجيل:
تاريخ التقييم: 2014/09/02 **تاريخ انتهاء صلاحية التقييم والشهادة: 2016/09/01**




ملاحظات:

- تعتبر هذه الشهادة وثيقة على طلب المقاول المسجل، ولا يجوز أن تكون وثيقة أو غير قابلة أو مسؤولية أو غير قابلة للمسؤول أو لغيره.
- تعتبر هذه الشهادة وثيقة في حال طرح المقاول وبمقتضى الشروط.
- في حال وجود أي استفسار، يرجى الاتصال على الرقم الموضح أدناه.

CONTRACTOR PRACTITIONERS REGISTER CERTIFICATE from M/S. MPM Properties.

Legal Document & Awards




رخصة تجارية Commercial License

License No.	802002	رقم الرخصة	802002
Company Name	EGY BUILD CONSTRUCTION (L.L.C)	اسم الشركة	EGY BUILD CONSTRUCTION (L.L.C)
Trade Name	EGY BUILD CONSTRUCTION L.L.C	اسم الشركة التجارية	EGY BUILD CONSTRUCTION (L.L.C)
Legal Type	Limited Liability Company (LLC)	النوع القانوني	شركة ذات مسؤولية محدودة
Establish Date	21/03/2014	تاريخ التأسيس	21/03/2014
DED P.O. Box No.	86101966	رقم صندوق البريد	86101966
Register No.	100001	رقم التسجيل التجاري	100001
Min. License No.	802002	رقم الرخصة الأدنى	802002
DED No.	110109	رقم الرخصة	110109

Licence Members / أعضاء الرخصة

Position / المنصب	Name / الاسم	Responsibility / المسؤولية	Mobile No. / رقم الهاتف
Manager / مدير	AMROU MOHAMMED YOUSSEF MOHAMMED	Supervisory / إشراف	283773

Licence Activities / أنشطة الرخصة

Building Contracting / عقود البناء

Addresses / العناوين

Head Office / المقر الرئيسي	PO Box / صندوق بريد	25100
File No. / رقم الملف	Postal No. / رقم البريدي	126-652
Mobile No. / رقم الهاتف المحمول	204-204-204-204	204-204-204-204

Signatures / التوقيعات

امرو محمد يوسف محمد

Print Date: 15/11/2015 10:01
 How you can check your trade license by sending a text message (SMS): Send your trade license number to 8000 (for example: 8000 8020002) to receive your license details.
 يمكنك التحقق من رخصة تجارة شركتك عن طريق إرسال رسالة نصية (SMS): أرسل رقم رخصة تجارة شركتك إلى 8000 (على سبيل المثال: 8000 8020002) لتلقي تفاصيل رخصة تجارة شركتك.

OUR COMMERCIAL LICENSE



شهادة تسجيل العضوية Membership Certificate

License No. / رقم الرخصة	802002
Membership No. / رقم العضوية	023734
Registration No. / رقم التسجيل التجاري	100001
Trade Name / الاسم التجاري	EGY BUILD CONSTRUCTION L.L.C
Legal Status / الوضع القانوني	Limited Liability Company / شركة ذات مسؤولية محدودة
Activity / النشاط	Building Contracting / عقود البناء
Member Since / تاريخ الانضمام	08/11/2015
Date of Issue / تاريخ الإصدار	18/10/2015
Expiry Date / تاريخ الانتهاء	11/10/2016

Remarks / ملاحظات:
 This certificate does not entail issuance of any document without member's authorization.
 لا يمكن إصدار أي وثيقة من دون تفويض من قبل العضو.
 For online verification of this Certificate, please visit our website: <http://www.dubaichamber.com/verify>
 للتحقق من صحة هذه الشهادة، يرجى زيارة موقعنا الإلكتروني: <http://www.dubaichamber.com/verify>

دائرة تنمية الأعمال التجارية
 Dubai Chamber of Commerce & Industry
 302, Box 1407 - Dubai, U.A.E. | Tel: 00971-4-3606666-88-000000 | Fax: 00971-4-3606666-88-000000
 شارع 1407، ص.ب. 302 - دبي، الإمارات العربية المتحدة | هاتف: 00971-4-3606666-88-000000 | فاكس: 00971-4-3606666-88-000000

DUBAI CHAMBER MEMBERSHIP CERTIFICATE

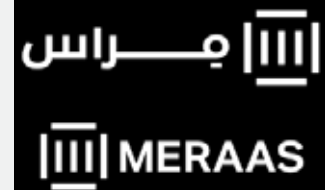
Our Clients



بنك دبي الإسلامي
Dubai Islamic Bank



مصرف الإمارات للتنمية
Emirates Development Bank



مؤسسة محمد بن راشد للإسكان
Mohammed Bin Rashid Housing Est.



برنامج الشيخ زايد للإسكان
Sheikh Zayed Housing Programme



سلطة دبي للمجمعات الإبداعية
DUBAI CREATIVE CLUSTERS AUTHORITY

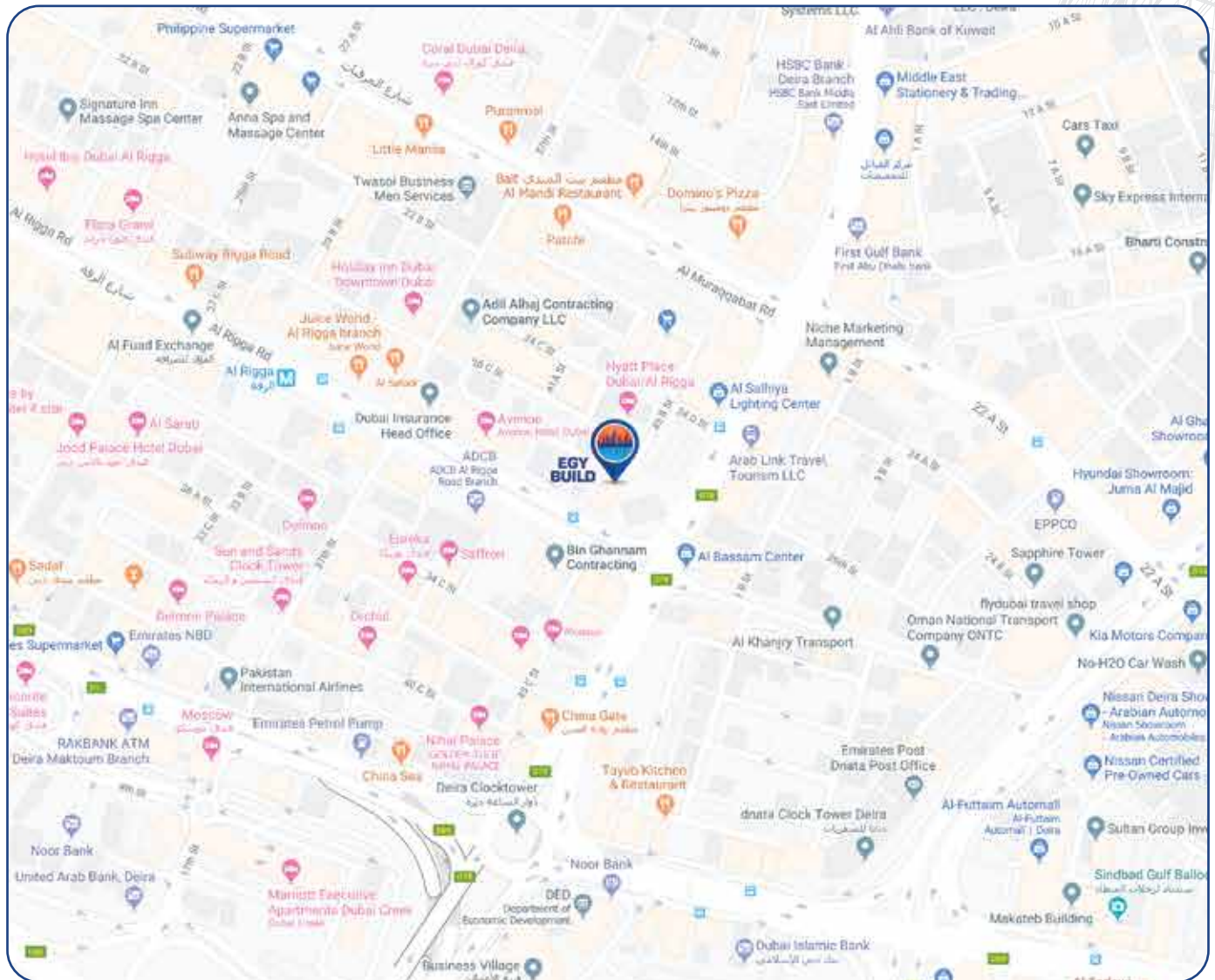
دائرة الشؤون الإسلامية
والمعمل الخيري
Islamic Affairs & Charitable
Activities Department

المكتب الهندسي
ENGINEERING OFFICE EO




مكتب الأوقاف
دائرة الأوقاف
Government of Sharjah
Department of Awqaf


Our Location






504, ALHAWAI Bldg, AL RIGGA ST,
P O Box-251108, Dubai, United Arab Emirates.

 +971 4 297 6112

 +971 4 297 6114

 info@egybuild.ae

 egybuild@hotmail.com

www.egybuild.ae