

The logo for Egy Build Construction LLC features a stylized blue 'e' with an orange sun and city skyline inside its upper curve. To the right of the 'e', the word 'egy build' is written in a large, blue, sans-serif font, with 'construction L L C' in a smaller, orange, sans-serif font below it.

# egy build

construction L L C

## Activities

Building Construction 

Finishing Works 

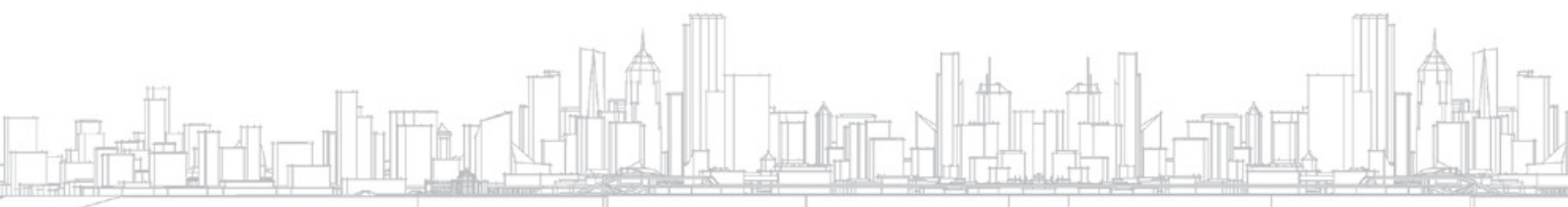
Villas & Buildings 

## Company Profile

Our  
Expertise  
Comes  
from the  
Experience

# CONTENT

<b>Introduction</b>	<b>01</b>
<b>General Manager Message</b>	<b>02</b>
<b>Why Egy build Construction LLC</b>	<b>03</b>
<b>Vision &amp; Mission</b>	<b>04</b>
<b>Organization Chart</b>	<b>05</b>
<b>Projects List</b>	<b>06</b>
» Completed Building Projects	06
» Ongoing Building Projects	06
» Completed Villas Projects	06
» Ongoing Villas Projects	09
<b>Our Projects Portfolio</b>	<b>10</b>
» Achieved Projects - Building Photos	11
» Achieved Projects - Villas Photos	14
» Ongoing Projects - Building Photos	22
» Ongoing Projects - Villas Photos	23
<b>Legal Document &amp; Awards</b>	<b>25</b>
<b>Our Clients</b>	<b>28</b>
<b>Our Office Location</b>	<b>29</b>



## Introduction



Egy Build Construction LLC, a Dubai based company, was established in 2007 by Eng. Ahmed. Since its inception, they have been providing high quality building construction services and fit out works to various clients across the UAE.

Our main office is located in Al Rigga - Dubai –UAE, which has qualified engineers and management staff, whom working hard on the most worthwhile programs and management techniques to support our well trained and well experienced workforce along with more than 160 Construction sites all around Dubai, U.A.E. Our

completed projects and satisfied clients are a testament to the quality of our output work that we deliver on planned integrated baselines. The fact that our clients are repetitive is evidence for the trust our clients have put on us.

## General Manager Message



**ENG. AHMED M.WAGIH**  
GENERAL MANAGER & FOUNDER.  
EGYBUILD CONSTRUCTION LLC.

**At Egybuild,** we believe that an ethical approach is the core value of our organization that goes right to the heart of everything we stand for. Ethical values are evident in every interaction with our employees, customers, suppliers and members of the public. Our business model is to integrate our core disciplines to deliver better project solutions across the chosen market areas.

**MY LEADERSHIP  
PHILOSOPHY IS BASED ON  
FIVE PRINCIPLES THAT I  
WOULD LOVE TO SHARE  
WITH YOU.**

5

We champion diverse talents, skills and backgrounds at Egybuild. Working together, we make a positive difference and continue to make sure that every project is the jealousy of the Country. Whether it is the construction of a high rise building to multiple residential villas, labour camps, Egybuild uses the latest ideas, skills and equipment to deliver the best solutions possible.

We believe in building long lasting business relationships with our clients and at Egybuild, each and every client is important. Our relationships are built on trust and integrity, providing the best services and delivering nothing but excellence. I am proud of the dedicated and ambitious team of professionals at Egybuild and would like to thank our clients for putting their trust in us and would ensure them, that we at, shall continue to outperform targets' and deliver par excellence quality and solutions.

## Why Egy build Construction LLC

We have our own fleet of Equipment and manpower, which gives the ability to compete very aggressively in terms of our pricing structure.

Successful project delivery stems from a much-focused approach. Main Board Director involvement is ensured in every project from start to finish as only 25-28 projects maximum are run at a time, ensuring that issues are dealt with efficiently and quickly and there is strong quality control.

This experience combined with highly knowledgeable and experienced staff provides an extremely

professional and competitive approach. The skill sets required to deliver high end residential projects and to deliver commercial shell and core buildings are quite different and Bennett have repeatedly shown the ability to deliver both for clients on many high profile projects Our people, our focus and our track record for delivery present a very strong case for choosing Egybuild Construction as the preferred construction partner.



## Vision

To provide specialist construction services solutions in an environment where people feel safe, secure and valued.

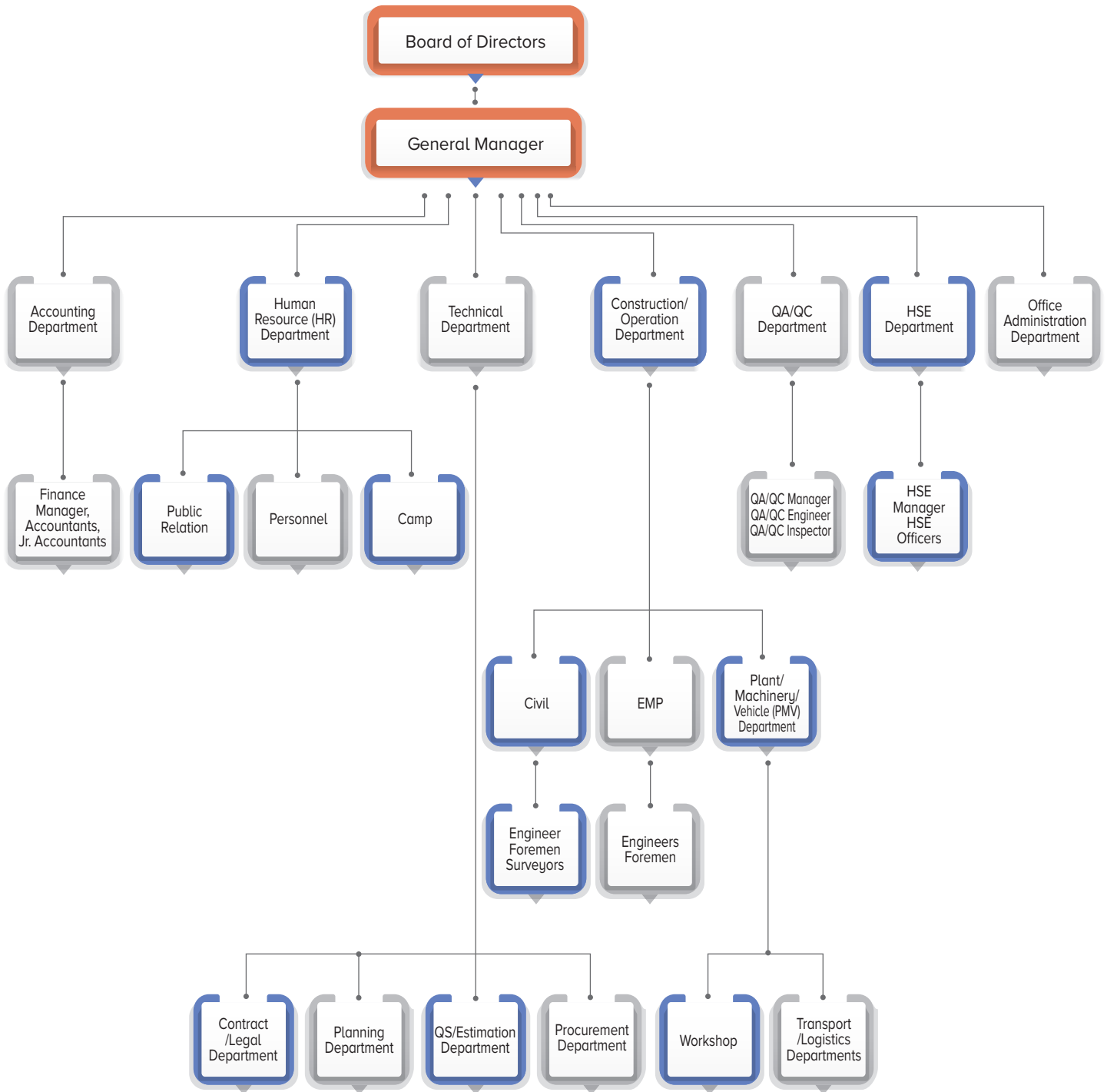
## Mission

To provide our clients with the utmost service quality, on time and budget delivery.

We shall achieve this by creating a partnership between our employees, managers, and shareholders focused on executing our projects on Time, under Budget, and within the Quality requirements.

We will perform this in the most efficient and productive manner such as to generate a reasonable return for our shareholders and ourselves.

# Organization Chart



## Projects List

### COMPLETED BUILDING PROJECTS

S.N	PROJECT NO	PROJECT DESCRIPTION	NAME OF CONSULTANT	COMPLETION YEAR	LOCATION
1	65	Building (G+4+R)	Safeer Engineering Consultants	2012	Al Baraha
2	98	Hotel (B+G+M+4+R)	NEXT Engineering Consultant	2015	Al Ras
3	113	Building (G+M+3+R)	W&M Engineering Consultant	2015	Al Dhagya
4	114	Building (G+M+1+R)	Al Majal Engineering Consultant	2015	Al Dhagya
5	115	Building (G+M+4+2R)	Al Majal Engineering Consultant	2017	Al Ras
6	116	Building (G+M+1+R)	Al Majal Engineering Consultants	2016	Building
7	117	Building (G+M+1+R)	Al Majal Engineering Consultants	2015	Al Dhagya
8	119	Building (G+M+2)	NEXT Engineering Consultant	2017	Al Muteena
9	121	Building (G+M+2)	W&M Engineering Consultants	2015	Hor Al Anzz
10	129	Building (G+M+2)	Future Design Engineering Consultant	2016	Al Ras
11	130	Labour Camp (G+3)	Vow Engineering Consultant	2017	Jabal Ali
12	132	Labour Camp (G+4)	Module Engineering Consultant	2016	Al Quoz
13	134	Building (G+M+4+2R)	Safeer Engineering Consultants	2017	Al Murar
14	135	Multi Function (G+1)+Shop (G+1)	Al Dana Engineering Consultan	2017	Al Barsha
15	147	Building (G+2)	Al Watan Alarabi Eng. Consultant	2018	Abu Hail
16	148	Building (G+3)	Eng. Addnan Safarini	2019	Abu Hail
17	150	Building (G+M+2+R)	Eng. Addnan Safarini	2019	Naif
18	153	Building (G+M+2)	Safeer Engineering Consultants	2018	Al Muteena
19	154	Building (G+M+2)	Consultant Center Engineering Design	2018	Jumeira 1
20	158	Labor Camp (G+4)	Adwar Eng. Consultant	2019	Jabal Ali
21	160	Building (G+P+4+R)	Al Dana Engineeign consultant	2019	Warsan
22	165	Mosque (G+S.Blocks)	Al Ghaith Engineering Consulant	2019	Al Khawaneej

### ONGOING BUILDING PROJECTS

S.N	PROJECT NO	PROJECT DESCRIPTION	NAME OF CONSULTANT	COMPLETION YEAR	LOCATION
1	161	Building (G+M+3+R)	AL Watan Alarbi Engineering Cons	Running	Al Dhagya
2	162	Private School (G+3+S.Block)	7lines0Eng. Consultant	Running	Al Warqaa
3	166	Building (G+M+2+R)	Eng. Addnan Safarini	Running	Ayal naser
4	172	Building (G+3+R)	Al Dana Engineeign consultant	Running	Al Hamariya
5	176	Jebal Ali Mall (B+G+1)	Golden square Consulting Engineers	Running	Jabal Ali
6	176B	Mosque (G+S.Blocks)	Golden square Consulting Engineers	Running	Jabal Ali

### COMPLETED VILLAS PROJECTS

S.N	PROJECT NO	PROJECT DESCRIPTION	NAME OF CONSULTANT	COMPLETION YEAR	LOCATION
1	1	Villa (G+1)	E.Home Engineering Consultants	2009	Al khawaneej-1
2	2	Villa (G+1+SB)	SAS Engineering Consultants	2008	Al Warqaa 4
3	3	Villa (G+1)	SAS Engineering Consultants	2008	Al Warqaa 3
4	4	Villa (G+1+SB)	SAS Engineering Consultants	2008	Al Warqaa 3
5	5	Villa (G)	SAS Engineering Consultants	2009	Al Warqaa 4
6	6	Villa (G+1)	Alanfal Engineering Consultants	2009	Al Warqaa 2
7	7	Villa (G+1+SB)	SAS Engineering Consultants	2009	Al Mezhee 1
8	8	Villa (G+1+SB+CP+S.Pool)	Access Engineering Consultants	2010	Al khawaneej-1
9	9	Villa (G)	SAS Engineering Consultants	2009	Al Warqaa 3
10	10	Villa (G)	High Art Engineering Consultants	2009	Al Warqaa 2

11	11	Villa (G+SB)	Future Design Engineering Consultants	2009	Al Warqaa 2
12	12	Villa (G+1)	SAS Engineering Consultants	2009	Oud Muteenah 2
13	13	Villa (G)	SAS Engineering Consultants	2010	Nad Al Hamar
14	14	Villa (G)	Al Manhal Engineering Consultants	2010	Al Warqaa 2
15	14B	Villa (G+1)	Al Gethoor Engineering Consultants	2010	Al Warqaa
16	15	Villa (G+1)	SAS Engineering Consultants	2010	Oud Muteenah 2
17	16	Villa (G)	W&M Engineering Consultants	2010	Al Warqaa 2
18	17	Villa (G)	SAS Engineering Consultants	2010	Al Warqaa 3
19	18	Villa (G)	E.Home Engineering Consultants	2010	Al khawaneej-1
20	19	Villa (G+1)	Al Raed Engineering Consultants	2011	Al Khawaneej
21	20	Villa (G+1+SB)	Al Ghaith Engineering Consultants	2010	Oud Muteenah 2
22	21	Villa (G+1)	German Engineering Consultants	2010	Al Warqaa 2
23	22	Villa (G+2)	Al Anfal Engineering Consultants	2010	Al Warqaa 2
24	23	Villa (G+1)	SAS Engineering Consultants	2010	Al Warqaa 3
25	24	Villa (G+1)	SAS Engineering Consultants	2010	Al Warqaa 2
26	25	Villa (G)	German Engineering Consultants	2010	Al Warqaa 3
27	26	Villa (G+2)	Al Mulla Engineering Consultants	2011	Nad Shama
28	27	Villa (G+1+SB)	German Engineering Consultants	2011	Al Warqaa 2
29	28	Villa (G+1)	Safeer Engineering Consultants	2012	Al Warqaa 3
30	29	Villa (G+1)	German Engineering Consultants	2011	Oud Muteenah 2
31	30	Villa (G+1)	Team 90 Engineering Consultant	2011	Al Warqaa 3
32	30B	Villa (G+1+SB)	Al Gethoor Engineering Consultants	2012	Al Warqaa 3
33	31	Villa (G+1)	Al gethoor Engineering Consultants	2011	Al Warqaa 3
34	31B	Villa (G+1)	Al Gethoor Engineering Consultants	2013	Muhaisnah 3
35	32	Villa (G+1)	B.T.A Engineering Consultants	2011	Al Warqaa 2
36	33	Villa (G+1+SB)	Al Anfal Engineering Consultants	2011	Nad Al Hamar
37	34	Villa (G+1)	High Art Engineering Consultants	2014	Al khawaneej-1
38	35	Villa (G+1)	SAS Engineering Consultants`	2012	Nad Al Shiba 4
39	36	Villa (G+1)	Al Anfal Engineering Consultants	2011	Al Warqaa 4
40	37	Villa (G+1)	SAS Engineering Consultants	2011	Al Warqaa 2
41	38	Villa (G+1+SB)	SAS Engineering Consultants	2011	Al Warqaa 3
42	39	Villa (G+1)	Touch Free Hands Engineering Consultants	2014	Al khawaneej-1
43	40	Villa (G+1+SB)	German Engineering Consultants	2011	Al Mezhee 1
44	41	Villa (G)	Ramesh & Association Eng. Cons	2011	Al Warqaa 2
45	42	Villa (G+1+SB)	SAS Engineering Consultants	2012	Al khawaneej-1
46	43	Villa (G+1+SB)	Safeer Engineering Consultants	2012	Oud Muteenah 2
47	44	Villa (G)	Pioneer of Experts Eng. Consultant	2012	Al Warqaa 4
48	45	Villa (G+1)	Future Design Engineering Consultants	2012	Al khawaneej-1
49	46	Villa (G+1)	High Art Engineering Consultants	2012	Al Warqaa
50	47	Villa (G+1)	AL Anfal Engineering Consultants	2012	Al Warqaa 2
51	48	Villa (G+1+SB)	Tasis Eng. Cons.	2012	Nad Al Hamar
52	49	Villa (G+1)	Winner Engi.Cons.	2012	Al Mizher 1
53	50	Villa (G+1)	Al Anfal Engineering Consultants	2013	Al khawaneej-1
54	51	Villa (G+1+SB)	E-Home Eng.Cons	2012	Al khawaneej-1
55	52	Villa (G+1)	Al Anfal Engineering Consultants	2012	Al Warqaa 3
56	53	Villa (G+1+SB)	Tasees Engineering Consultants	2012	Oud Muteenah 2
57	54	Villa (G+1)	Talent Eng. Consultants	2012	Al Rashidya
58	55	Villa (G+1)	E-Home Engineering Consultants	2012	Oud Muteenah 2
59	56	Villa (G+1+SB)	Al Anfal Engineering Consultants	2013	Al khawaneej-1
60	57	Villa (G)	Al Gethoor Engineering Consultants	2012	Al Warqaa 3
61	58	Villa (G+1+SB)	Al Anfal Engineering Consultants	2012	Al Mizher 1
62	59	Villa (G+1)	High Art Engineering Consultants	2013	Al Khawaneej
63	60	Villa (G+1+SB)	Arabian Modern Engineering Consultants	2012	Al Warqaa 3

64	61	Villa (G+1)	Talent Engineering Consultants	2013	Al khawaneej-1
65	62	Villa (G+1)	B.T.A Engineering Consultants	2012	Al Mezher 1
66	63	Villa (G+1)	SAS Engineering Consultants	2013	Al Warqaa 3
67	64	Villa (G+SB)	Winner Engineering Consultants	2012	Al Warqaa 4
68	66	Villa (G+1)	Talent Engineering Consultants	2012	Al khawaneej-1
69	67A	Villa (G+1)	High Art Engineering Consultants	2014	Al Warqaa 4
70	67B	Villa (G+1)	High Art Engineering Consultants	2013	Al Warqaa 3
71	68	Villa (G+1)	Touch Free Hand Engineering Consultant	2014	Al khawaneej-1
72	69	Villa (G+1)	SAS Engineering Consultants	2015	Oud Muteenah 2
73	70	Villa (G+1)	SAS Engineering Consultants	2012	Oud Al Muteena
74	71	Villa (G+1+SB)	German Engineering Consultants	2012	Al Warqaa 2
75	72	Villa (G+1)	German Engineering Consultants	2012	Al Mezher 1
76	73	Villa (G+1)	Al Anfal Engineering Consultants	2013	Al khawaneej-1
77	74	Villa (G)	High Art Engineering Consultants	2012	Al Warqaa 3
78	75	Villa (G+1+SB)	Al Jethor Engineering Consultants	2013	Al Warqaa 4
79	76A	Villa (G+1+SB)	SAS Consultants	2013	Al Warqaa 2
80	76B	Villa (G+1+SB)	Al Gethoor Engineering Consultants	2012	Nad Al Hamar
81	77	Villa (G+1)	SAS Engineering Consultants	2012	Al khawaneej-1
82	78	Villa (G+1)	NEXT Engineering Consultants	2012	Al Mezher 1
83	79	Villa (G+1)	Lines Engineering Consultants	2012	Al Warqaa 2
84	80	Villa (G+1)	Winner Engineering Consultants	2012	Al khawaneej-1
85	81	Villa (G+SB)	Al Majal Engineering Consultants	2013	Al Warqaa 3
86	82	Villa (G+SB)	SAS Engineering Consultants	2013	Al Warqaa 2
87	83	Villa (G+1+SB)	Tasees Engineering Consultants	2014	Al Mizhar 1
88	84	Villa (G+1+SB)	Pioneers of Experts	2014	Al khawaneej-1
89	85	Villa (G)	German Engineering Consultants	2013	Al Warqaa 3
90	86	Villa (G)	Al Khozma Engineering Consultants	2013	Al Warqaa 4
91	87	Villa (G+1+SB)	German Engineering Consultants	2013	Al Quoz 4
92	88	Villa (G+1)	High Art Engineering Consultants	2015	Al Warqaa 3
93	89	Villa (G+1+SB)	Al Majal Engineering Consultants	2014	Oud Muteenah 2
94	90	Villa (G+1)	Al Manhal Engineering Consultant	2014	Al Mizher 2
95	91	Villa (G+1)	B.T.A Engineering Consultant	2013	Al khawaneej-1
96	92	Warehouse Ground Floor	Next Engineering Consultant	2015	Al Quoz Ind-1
97	93	Villa (G+1+SB)	SAS Engineering Consultancy	2015	Al khawaneej-1
98	94	Villa (G+1)	Safeer Engineering Consultants	2014	Al Warqaa 3
99	95	Villa (G+1)	Engineer Adana Safareni	2015	Al khawaneej-1
100	97	Villa (G)	Al Majal Engineering Consultants	2014	Al Mizhar 1
101	99	Villa (G+1)	Engineer Adana Safareni	2014	Al barsha
102	100	Villa (G)	Al Majal Engineering Consultants	2015	Al Warqaa
103	100B	Villa (G)	Al Shiroog Engineering Consultant	2014	Al Warqaa
104	101	Villa (G+1)	W&M Engineering Consultants	2015	Nad Al Hamar
105	102	Villa (G+1)	Vow Engineering Consultant	2014	Muhaisnah 3
106	103	Villa (G+1)	Al Mujssam Engineering Cosultant	2015	Al Mizhar 1
107	104	Villa (G+1+SB)	Al Jawaher Engineering Consultant	2019	Al Warqaa
108	105	Complex of 14 Villa (G+2)	Vow Engineering Consultants	2014	Jabel Ali
109	106	Villa (G+1)	Al Rafidain Engineering Consultant	2014	Al Khawaneej
110	107	Villa (G+1+SB)	Al Majal Engineering Consultant	2016	Oud Al Muteena
111	108	Villa (G+1)	High Art Engineering Consultants	2016	Al khawaneej-1
112	108B	Villa (G+1)	Al Anfal Engineering Consultants	2015	Al khawaneej-1
113	109	Villa (G+1)	Vow Engineering Consultant	2016	Nad Al Sheba 4
114	110	Villa (G+1+SB)	Next Engineering Consultant	2016	Al Barsha South
115	111	Villa (G+1+SB)	Next Engineering Consultant	2018	Al Barsha South
116	112	Villa (G+1)	Vow Engineering Consultant	2015	Oud Al Muteena 1

117	118A	Villa (G+1+SB)	Al Gethoor Engineering Consultant	2019	Al Barsha
118	118B	Villa (G+1)	Al Jethor Engineering Consultants	2017	Al Barsha
119	120	Villa (G+1)	Vow Engineering Consultant	2016	Nad Al Sheba 4
120	122	6 Villas (G+2)	Al Majal Engineering Consultant	2019	Mirdiff
121	123	Villa (G+1)	Al Majal Engineering Consultant	2018	Al Warqa
122	124	Villa (G+1+SB)	Engineer Adana Safareni	2016	Al Twar
123	126	Villa (G+1+SB)	Vow Engineering Consultant	2018	Nadd Al sheba 4
124	127	Villa (G+1)	Vow Engineering Consultant	2017	Al Khawaneej
125	128	Villa (G+1+SB)	German Engineering Consultants	2017	Al Khawaneej
126	131	Villa (G+1+SB)	Al Dana Engineering Consultants	2017	Umm Saquim
127	133	Villa (G+1+SB)	Al Gethoor Engineering Consultants	2017	Al Warqaa 3
128	136	Villa (G+1+SB)	Xpert Engineering Consultants	2017	Al Lisaliy
129	137	Villa (G+1+SB)	Al Majal Engineering Consultants	2017	Al Barsha
130	138	Villa (G+1+SB)	Xpert Engineering Consultants	2017	Al Khawaneej
131	139	Villa (G+1+SB)	Tasees Engineering Consultants	2017	Nad Al Hammar
132	140	Villa (G+1+SB)	Naga Consultants	2018	Umm Squeim
133	141	Villa (G+1+SB)	Adnan Saffirani	2018	Nad Al Hammar
134	142	Villa (G+1+SB)	Highart Engineering Consultant	2018	Al Khawaneej
135	143	Villa (G+1+SB)	Eng. Addnan Safarini	2019	Al Lisaliy
136	144	2 Villa (G+1)	Al Majal Engineering Consultants	2017	Hor Al Anzz
137	145	Villa (G+1+SB)	Adnan Saffirani	2018	Al Khawaneej
138	146	Villa (G+1+SB)	Al Majal Engineering Consultant	2018	Al Warqaa
139	149	Villa (G+1+SB)	Al Mulla Engineering Consultants	2017	Al Satwa
140	151	Villa (G+1+SB)	Consultant Center Engineering Design	2018	Al Barsha
141	152	Villa (G+1+SB)	Vow Engineering Consultant	2019	Al Warqaa 4
142	156	Villa (G+1+SB)	Future Art Eng. Consultant	2019	Al Warqaa 4
143	157	Villa (G+1)	Al Majal Engineering Consultant	2019	Al Mizher
144	167	Villa (G+1)	Arkan Eng. Consultant	2019	Al Barsha
145	168	Villa (G+1)	German Eng. Consultant	2019	Al Warqaa

## ONGOING VILLAS PROJECTS

S.N	PROJECT NO	PROJECT DESCRIPTION	NAME OF CONSULTANT	COMPLETION YEAR	LOCATION
1	125	Villa (G+1+SB)	Al Majal Engineering Consultant	Running	Al Warqaa 3
2	155	Villa (G+1)	Emaret Alsharq Egn. Consultant	Running	Al Khawaneej
3	159	Villa (G+1)	Poineer of Experts	Running	Al Khawaneej
4	163	Villa (G+1)	Future Art Eng. Consultant	Running	AL SATWA
5	164	Villa (G+1)	AL Watan Alarbi Engineering Cons	Running	Al Khawaneej
6	169	Villa (G+1)	Ramesh & Associates	Running	Al Khawaneej
7	170	Villa (B+G+1+SB)	CVTEC Consulting Engineers	Running	Nad Al Sheba 4
8	171	Villa (G+1)	Arkan Eng. Consultant	Running	Al Warqaa 3
9	173	Villa (B+G+1)	Vow Engineering Consultant	Running	Al Warqaa 3
10	174	Villa (B+G+1+SB)	Vow Engineering Consultant	Running	Dubai Hills
11	175	Villa (G+1)	AL Watan Alarbi Engineering Cons	Running	Al Warqaa
12	177	Villa (G+1)	Future Art Eng. Consultant	Running	Al Warqaa
13	178	Villa (G+1+S.W)	Arkan Engineering Consultancy	Running	Barsha South 2
14	179	Villa (G+1+K.B)	Arkan Engineering Consultancy	Running	Al Awir 1
15	180	Villa (G+1+K.B)	Arkan Engineering Consultancy	Running	Al Awir 1
16	181	Villa (G+1)	Pioneers of Expert Engineering Consultant	Running	Al Warqaa 4
17	182	Villa (G+1)	Arkan Engineering Consultancy	Running	Barsha South 2
18	183	Villa (G+1)	Arkan Engineering Consultancy	Running	Barsha South 1
19	184	Villa (G+1)	Arkan Engineering Consultancy	Running	Barsha South 2



# Our Projects Portfolio

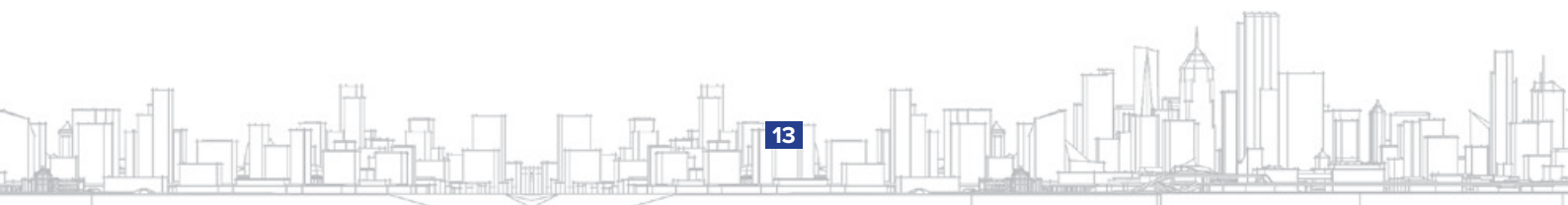


# Achieved Projects

## BUILDING PHOTOS







# Achieved Projects

## VILLAS PHOTOS



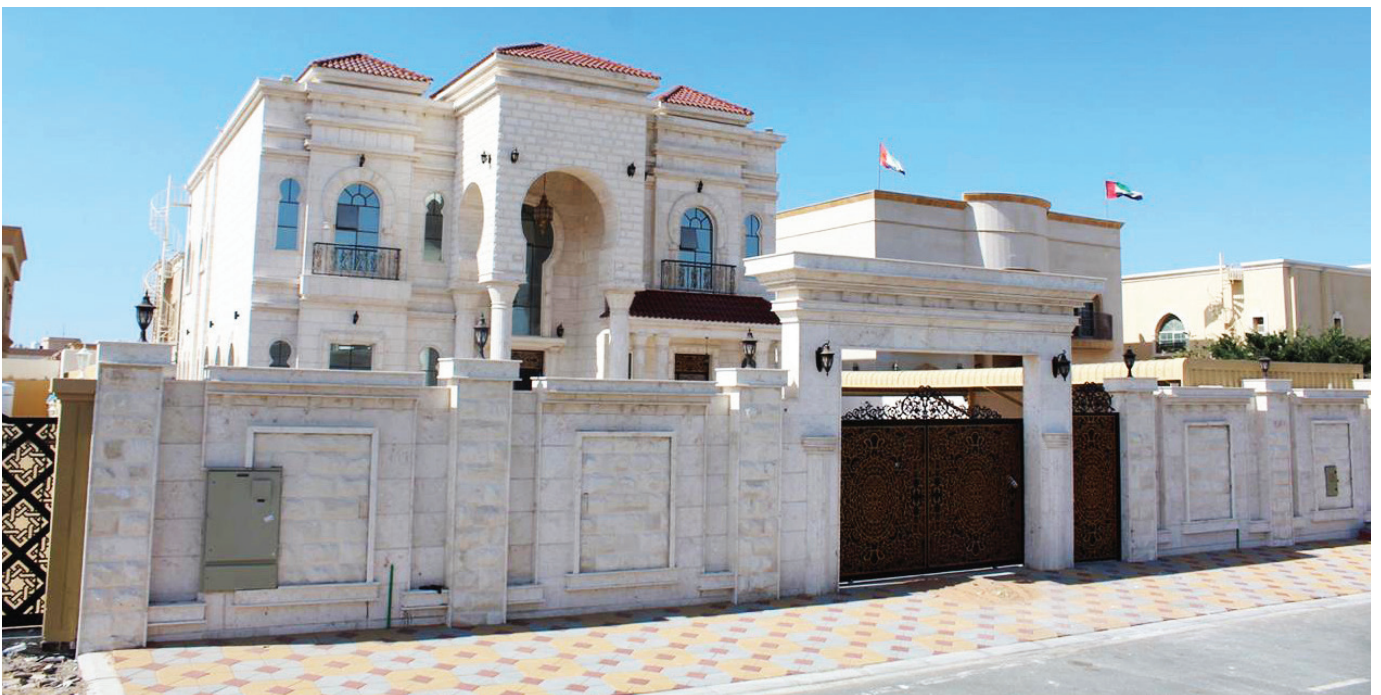


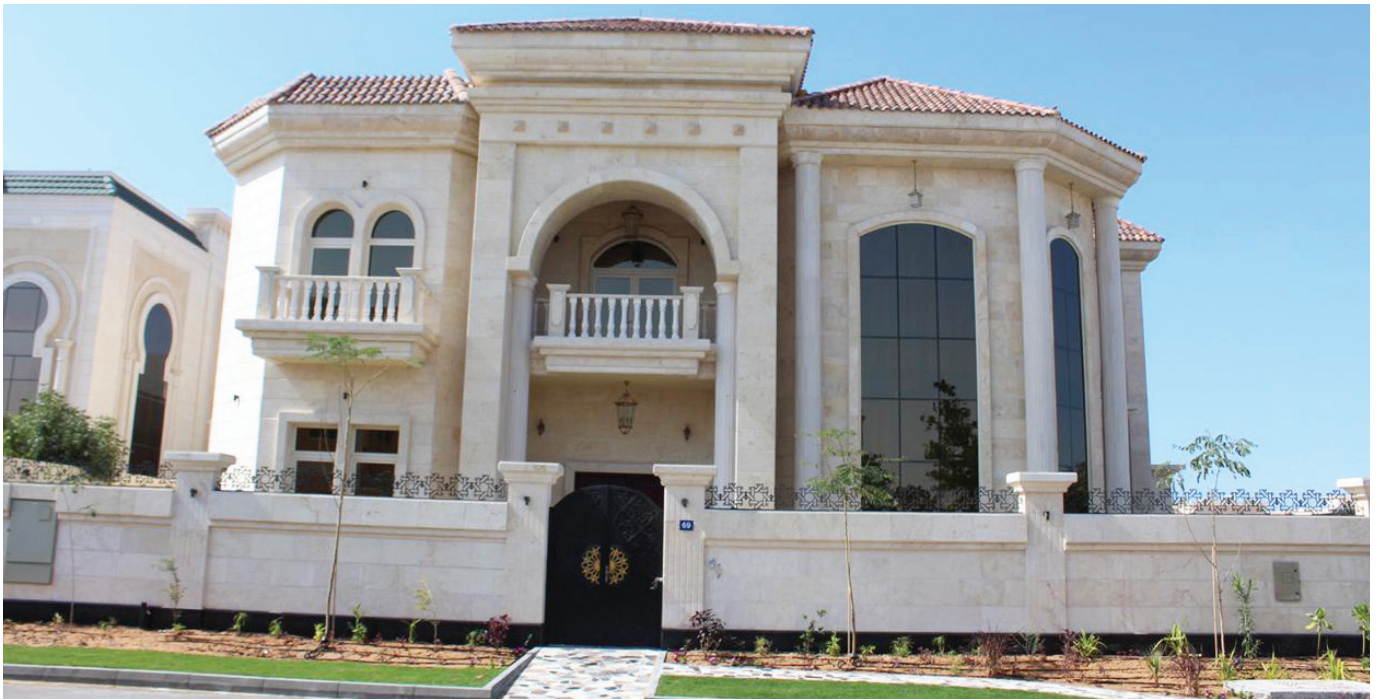












# Ongoing Projects

## BUILDING PHOTOS



# Ongoing Projects

## VILLAS PHOTOS





# Legal Documents & Awards





برنامج الشيخ زايد للإسكان  
Sheikh Zayed Housing Programme

**شهادة تسجيل مقاول**

**رقم التسجيل : 1684**

الاسم التجاري : ايجي بيك للإشاعات ذ م م

الإمارة : دبي      المنطقة: العرفات      ص.ب : 251108

الهاتف : 042976112      الفاكس : 042976114

ملاحظات :

---

تاريخ التسجيل : 2008/02/04      تاريخ الانتهاء : 2012/11/06

مدير إدارة الخدمات الهندسية  
عبدالله علي رجب آل علي



CONTRACTOR PRACTITIONERS REGISTER CERTIFICATE  
 from Sheikh Zayed Housing Programme



مؤسسة محمد بن راشد للإسكان  
Mohammed Bin Rashid Housing Est.

Date : 7-Feb-2008  
Ref : TS/P131/02/08

M/s. EGY Build Construction  
P.O.Box 251108  
Dubai

Dear Sir,

**Subject : Contractors Prequalification Report -I**

It is our pleasure to inform you that your application for contractor Pre-qualification assessment has been approved and you are entitled for 3 projects with MBR Housing Est. until further Pre-qualification report.

Yours Faithfully,



**Eng. Jilma Khalifa Al-Fuqaei**  
Director of Maintenance & Technical Services



CONTRACTOR PRACTITIONERS REGISTER CERTIFICATE  
 from Mohammed Bin Rashid Housing Est.



MPM  
Properties

**شهادة تسجيل مقاول**

التاريخ : 2014/09/31

الاسم التجاري : ايجي بيك للإشاعات - (فئة رابعة)

بيانات الفرد:		
رقم التسجيل:	4/02/204	البلد: دبي

بيانات التسجيل:		
تاريخ التقييم:	2014/09/02	تاريخ انتهاء صلاحية التقييم والشهادة: 2016/09/01



مدير قطاع المشاريع



ملاحظات:

- اعطيت هذه الشهادة بناء على طلب المقاول المذكور. اذ قد دون ان تشمل شعبة أو من أو العناية أي مسؤولية أو التزام
- تجاه المقاول أو تجاه الغير.
- تعهد هذه الشهادة لانه في حال ابراج المقاول بملفها السكنية.
- في حال وجود أي متطلبات أخرى، يرجى الاتصال على الأرقام الموضحة لينا.

CONTRACTOR PRACTITIONERS REGISTER CERTIFICATE  
 from M/S. MPM Properties.



## رخصة تجارية Commercial License

### تفاصيل الرخصة / License Details

License No.	602502	رقم الرخصة
Company Name	EGY BUILD CONSTRUCTION (L.L.C)	اسم الشركة
Trade Name	EGY BUILD CONSTRUCTION (L.L.C)	الإسم التجاري
Legal Type	Limited Liability Company(LLC)	الشكل القانوني
Expiry Date	31/10/2025	تاريخ الإنتهاء
D&B D-U-N-S @	851017686	الرقم العالمي
Register No.	1018589	رقم السجل التجاري
Issue Date	01/11/2007	تاريخ الإصدار
Main License No.	602502	رقم الرخصة الام
DCCI No.	125578	عضوية الغرفة

### الاطراف / License Members

Share / الحصص	Role / الصفة	Nationality / الجنسية	Name / الإسم	No./ رقم الشخص
	Manager / مدير	Egypt / مصر	احمد محمد وجيه محمد	266773
AHMED MOHAMED WAGIH MOHAMED				

### نشاط الرخصة التجارية / License Activities

Building Contracting

مقاولات البناء

### العنوان / Address

Phone No	971-4-2976112	تليفون	P.O. Box	251108	صندوق بريد
Fax No	971-4-2976114	فاكس	Parcel ID	124-163	رقم القطعة
Mobile No	971-50-8100332	هاتف متحرك	البريد الإلكتروني / Email	egybuild@hotmail.com	
ملك موزه سويدان سعيد الفراريه الكتيبي - المرقبات (FL-5) مكتب رقم 504					

### الملاحظات / Remarks

مقاولات بناء ( غير محدودة الطوابق )

تم نقل الموقع بتاريخ 28/6/2022

Print Date 24/10/2023 10:46 تاريخ الطباعة

Receipt No.

15290345

رقم الإيصال



يمكنك الآن تجديد رخصتك التجارية من خلال الرسائل النصية القصيرة، أرسل رقم الرخصة إلى 6969 (دو/اتصالات) للحصول على إذن الدفع.

Now you can renew your trade license by sending a text message (SMS). Send your trade license number to 6969 (Du/ Etisalat) to receive payment voucher.

Get FREE access to Zoho One for the first year  
احصل على زوهو ون مجاناً للسنة الأولى



Zoho.com/det

وثيقة إلكترونية معتمدة وصادرة بدون توقيع من دائرة الاقتصاد والسياحة في دبي. لمراجعة صحة البيانات الواردة في الرخصة يرجى مسح رمز الاستجابة السريعة this is a certified e-document issued without signature by the department of Economy and Tourism. Kindly Scan the QR Code to Verify the certificate

## Our Clients



سلطة دبي للمجمعات الإبداعية  
DUBAI CREATIVE CLUSTERS AUTHORITY



مؤسسة محمد بن راشد للإسكان  
Mohammed Bin Rashid Housing Est.

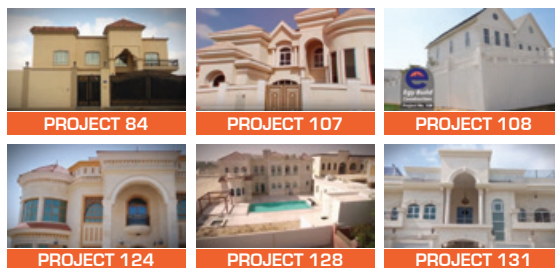


برنامج الشيخ زايد للإسكان  
Sheikh Zayed Housing Programme





[Click here for  
Work Project Videos](#)



 **egy build**  
construction L L C

504, ALHAWAY Bldg, AL RIGGA ST,  
P O Box-251108, Dubai, United Arab Emirates.

 +971 4 297 6112

 +971 4 297 6114

 info@egybuild.ae

 egybuild@hotmail.com